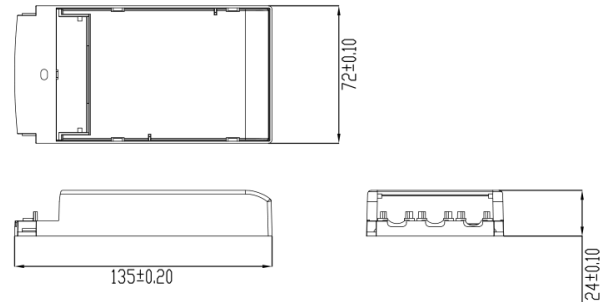


SWITCH TO BRIGHTER FUTURE

Product data sheet: IEM-45D TW

Features

- DALI-2 certified LED driver
- Dimmable with DALI signal
- Super compact design
- Driver is suitable for built-in or independent installation
- Push-in wire terminal for easy install of input cable
- switchDIM and colourSWITCH with memory function
- colourSWITCH with predefined colours
- Dimming range 2...100%
- Configurable constant current output via dip-switch
- Low ripple current, flicker-free
- Protections: over load, over-heat, short circuit
- Suitable for use in emergency lighting systems
- SELV equivalent
- Protection class II
- Nominal life-time up to 50,000 h
- 5-year guarantee



Applications

- Office
- Shop
- Hospitality
- Public areas

Approbations & Certifications

CE, CB, TUV, DALI2

Housing properties

- Housing material: plastic, white.
- Type of protection IP20

Electrical Specifications

Type		Unit	IEM-45D TW						
INPUT	Nominal voltage	V	220 – 240						
	Nominal frequency	Hz	0 / 50 / 60						
	AC voltage range	V	198 – 264						
	DC voltage range	V	176 - 370						
	Nominal current	A	0.26						
	THD (Full load)	%	≤ 15						
	Power factor (Full load)		0.95						
	Efficiency (Full load)	%	87						
	NO load	W	≤ 0.5						
	Protection class		II						
	Inrush current(Cold start)	A pk	30(th = 100 μs)						
	Max.units per circuit breaker		B10: 23 B16: 37 C10: 46 C16: 74						
	OUTPUT	Nominal voltage range	V	10 - 50	10 - 50	10 - 50	10 - 50	10 - 50	10 - 50
Maximum voltage(Open Circuit)		Vdc	≤ 59						
Nominal current		mA	350	500	600	700	800	900	1050
Current accuracy		%	+/- 5						
Current ripple 100Hz		%	≤ 20						
Pst LM			≤ 1						
SVM			≤ 0.4						
Nominal power range		W	3.5 – 17.5	3.5 - 25	6 - 30	7 - 35	8 - 40	9 - 45	10.5 -45
Maximum power		W	45						
Galvanic isolation			SELV						
ENVIRONMENT	Ambient temperature range ta	°C	-20 ...+45						
	Maximum case temperature tc	°C	90						
	Max. Case temp. In fault conditio	°C	110						
	Storage temperature range	°C	-20 ...+70						
	Relative humidity	%	5 ... 85 (Not condensing)						
	Surge transient protection	kV	1 2 (L/N LN/PE acc to. EN 61547 Clause 5.7)						
	Environmental rating		Indoor						
	IP rating		IP 20						
	Mains switching cycles		> 100,000						
	Expected lifetime	h	50,000 (0.2% / 1'000 h failure rate)						

*All parameters NOT specially mentioned are measured at 230VAC input ,rated current and 25°C of ambient temperature

Protections

Over temperature

Yes

Over load

Yes

No load

Yes

Short-circuit

Yes

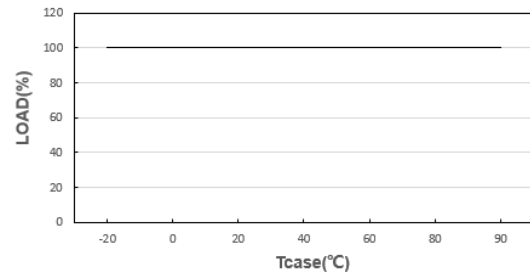
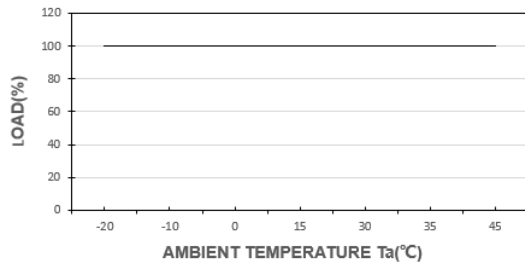
Input overvoltage

Maximum allowed input voltage 264V AC

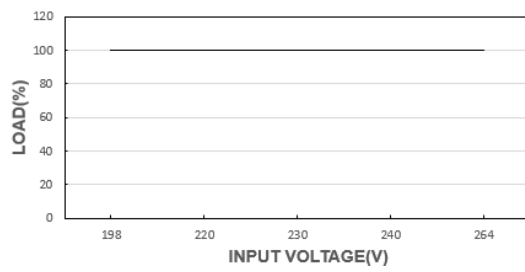
Output overvoltage

Yes, Limitation of Output voltage < 59V

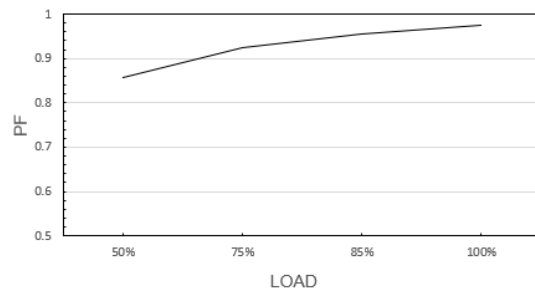
OUTPUT LOAD vs TEMPERATURE



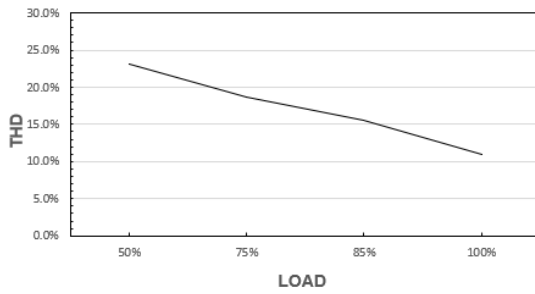
STATIC CHARACTERISTIC



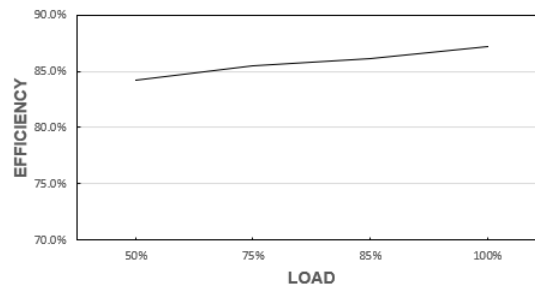
POWER FACTOR (PF) CHARACTERISTIC



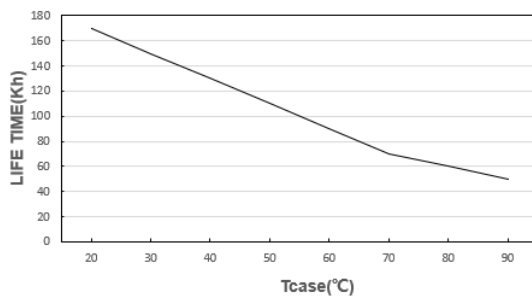
TOTAL HARMONIC DISTORTION (THD)



EFFICIENCY vs LOAD



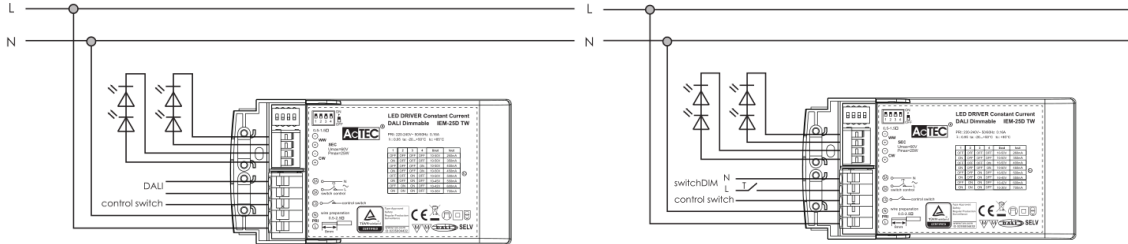
LIFE TIME



*The graph is for reference only, and the detailed values refer to the parameter table

Wiring Diagram

Terminal: Push in terminals
Max. cable length – DALI system: 300 m
Dimensions(LxWxH): 135x72x24 mm
Weight: 190 g



PRI

Cable cross-section: 0.75-2.5 mm²/AWG 18-14
Stripping: 6mm

SEC

Cable cross-section: 0.5-1.5 mm²/AWG 20-16
Stripping: 6mm

Hot plug-in or secondary switching of LEDs is not permitted and may cause a very high current to the LEDs.

Remarks

-Touch current: lower than 0.7 mA, according to EN 60598-1 annex. G and EN 61347-1 annex A

Standards

EN 61347-1
EN 61347-2-13
EN 62384
EN 55015
EN 61000-3-2
EN 61000-3-3
EN 61547
EN 60598-1
EN 50581
EN 62386-101
EN 62386-102
EN 62386-207
EN 62386-209
IEE1789
(EU) 2019/2020

Manufacturer's address:

No.4, Tongfu Road, Tong'an Industrial Center, Tong'an District, Xiamen, Fujian, China

www.actec.com