



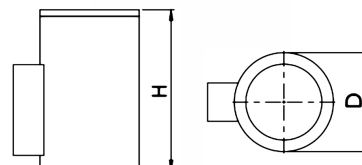
PRODUCT SHEET

Tube Wall Single 2750lm 830 45° 21W IP65 Ø155x250mm DarkGrey

Art. no: 1075-45-1



Tube Wall Single 2750lm 830 45° 21W IP65 Ø155x250mm

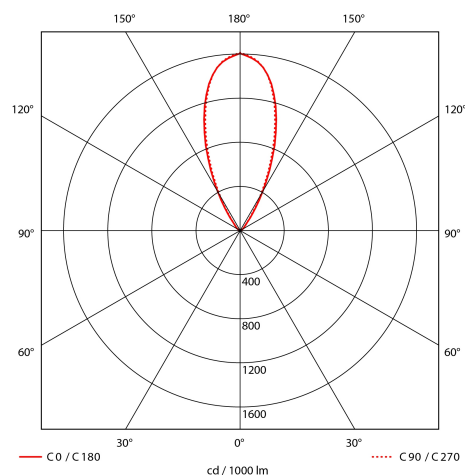


D, mm	H, mm
155	464
	250



SPECIFICATIONS

System Power [W]:	21W
CCT (Color Temperature):	3000K
CRI / Ra:	80
Lumen Output:	2055lm
Lumen LED (tc=25):	2779lm
Beam Angle:	45°
Lens (Diffuser):	None
Dimming:	None
System Voltage [V]:	230V 50Hz
Connection:	Terminal
Mounting:	Surface, Wall
Lifetime [h]:	L80B50: 35 000h
MacAdam (SDCM):	3
Color:	Dark Grey
Length [mm]:	250mm
Width [mm]:	155mm
Weight [kg]:	2,2kg



Tube Wall is a luminaire for outdoor installation on facades. Wall Tube is the perfect choice when you want to illuminate facades in order to underline the architecture of the building. Tube Wall up or down provides light in one direction.