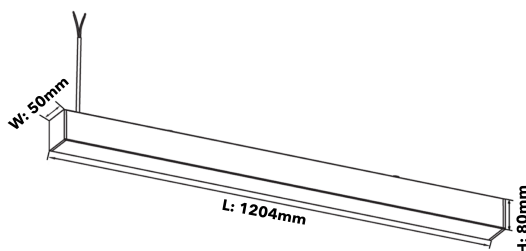
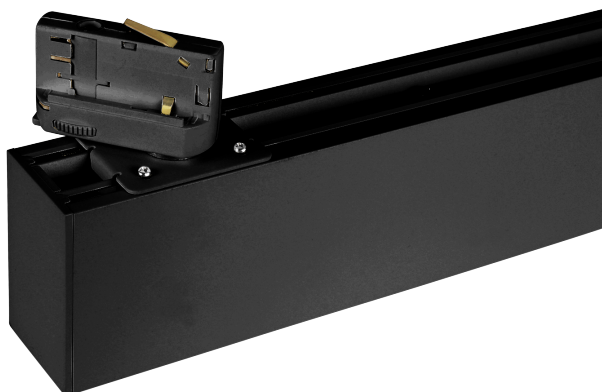




FDV SPEC SHEET

Linear

Art. no: 19042-02-2-ddd



Linear



Art. no: 19042-02-2-ddd

LIGHT TECHNICAL

Lightsource Type:	LED (built in)
Lumen Output:	3050 (3500K)
Lumen LED (tc=25):	3400
Beam Angle:	110°
CCT (Color Temperature):	30/35/4000
CRI / Ra:	90
Color Code:	930/935/940
Lens (Diffuser):	Opal

MOUNTING / CONNECTION

Connection:	Track 3-Circuit
Mounting:	Track, Ceiling

ELECTRICAL DATA

Dimming:	DALI2
System Power [W]:	36
System Voltage [V]:	230V 50Hz
Protection Class:	2
Max load pr circuit - B10:	35
Max load pr circuit - B16:	56
Max load pr circuit - C10:	35
Max load pr circuit - C16:	56
Leakage current [mA]:	0,7
Inrush current I _{max} [A]:	7,6
Inrush current time [μs]:	186
Socket / Cap-Base:	N/A



FDV SPEC SHEET

Linear

Art. no: 19042-02-2-ddd



PRODUCT

Ingress Protection:	IP40
Impact Protection:	IK08
Color:	Black
Length [mm]:	1204
Height [mm]:	140
Width [mm]:	50
Weight [kg]:	3,5