



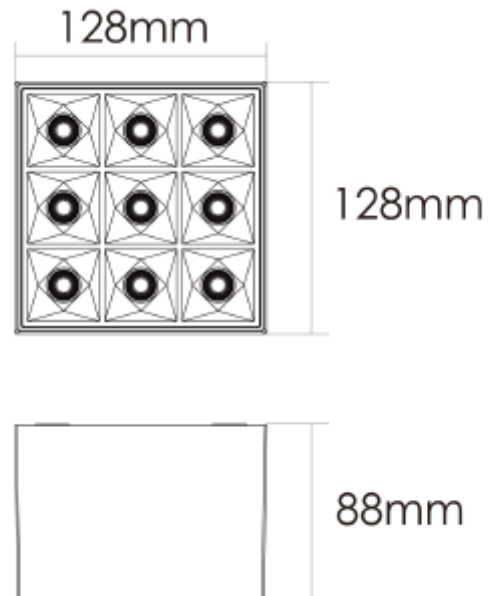
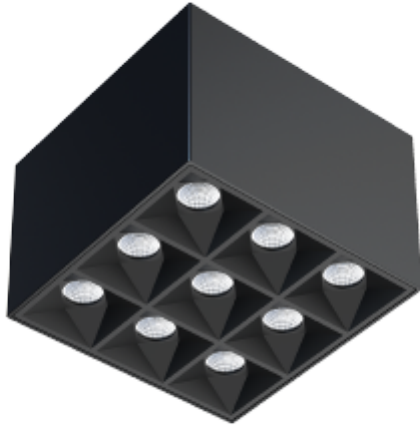
FDV SPEC SHEET

Phoenix Surface Downlight

Art. no: 101861-01-2



Lighting Solutions



Phoenix Surface Downlight



Art. no: 101861-01-2

LIGHT TECHNICAL

Lightsource Type:	LED (built in)
Lumen Output:	1650
Lumen LED (tc=25):	1850
Beam Angle:	35°
CCT (Color Temperature):	3000
CRI / Ra:	80
Color Code:	830
MacAdam (SDCM):	3
Lens (Diffuser):	Clear



FDV SPEC SHEET

Phoenix Surface Downlight

Art. no: 101861-01-2



MOUNTING / CONNECTION

Mounting: Ceiling

PRODUCT

To be recessed in insulation:	No
Ingress Protection:	IP20
Impact Protection:	IK04
Operating Temperature [°C]:	-20 - 45
Lifetime [h]:	L80B10: 50.000
Color:	Black
RAL:	RAL7021
Length [mm]:	128
Height [mm]:	88
Width [mm]:	128
Weight [kg]:	0,6
Housing Material :	Aluminium
Housing Material :	Aluminium

ELECTRICAL DATA

UGR (<=):	17
Dimming:	Phase-Cut
Dimming Output Type:	Amplitude Modulation
Dimming Phasecut Type:	Leading / Trailing edge
Flickerfree:	Yes
Flicker metric (Pst LM) <:	1
Stroboscopic effect metric (SVM) <	0,4
System Power [W]:	18
System Voltage [V]:	230V 50Hz
Protection Class:	1
Max load pr circuit - B10:	35
Max load pr circuit - B16:	56
Max load pr circuit - C10:	74
Max load pr circuit - C16:	118
Leakage current [mA]:	7
Inrush current I _{max} [A]:	5
Inrush current time [µs]:	300
Socket / Cap-Base:	N/A
Current Output [mA]:	700
Voltage Forward Min [V]:	20
Voltage Forward Max [V]:	30