



PRODUCT SHEET

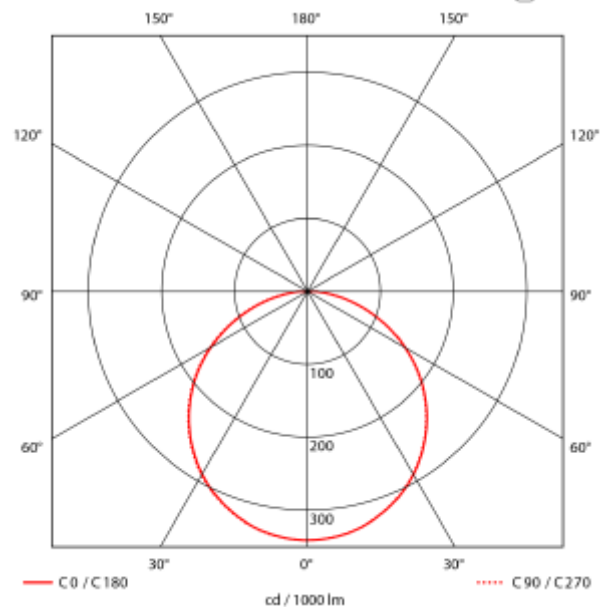
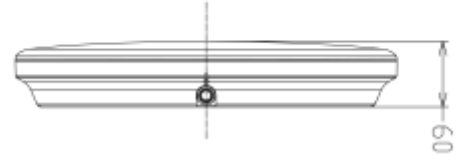
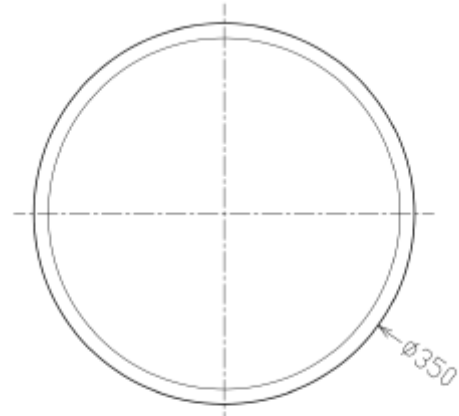
Celestial Plafond

Art. no: 101575-E-S-120-3

NORLUX®

Lighting Solutions

Celestial Plafond



Surface mounted ceiling light with emergencylight, microwave sensor and CCT switch (2700K-3000K). 3h emergencylight and selftest. Factory setting Detection Area: 100% holdt Time: 5S Daylight Sensor: Disable Standby dim level: 0% Stand.by period: - See installation manual for alternative sensor settings.



SPECIFICATIONS

Lightsource Type:	LED (built in)
System Power [W]:	25W
CCT (Color Temperature):	2700-3000K
CRI / Ra:	80
Lumen Output:	2750lm
Lumen LED (tc=25):	2900lm
Beam Angle:	120°
Lens (Diffuser):	Opal
Dimming:	Sensor (MW)
System Voltage [V]:	230V 50Hz
Connection:	QuickConnect
Mounting:	Wall, Ceiling
Lifetime [h]:	L80B10: 100 000h
Lumen/W:	110lm/W
MacAdam (SDCM):	3
Color:	White
Height [mm]:	60mm
Diameter [mm]:	350mm
Weight [kg]:	1,25kg
Emergency light [h]:	3 hours
Emergency light testing:	Selftest
Emergency lumen out [lm]:	300lm