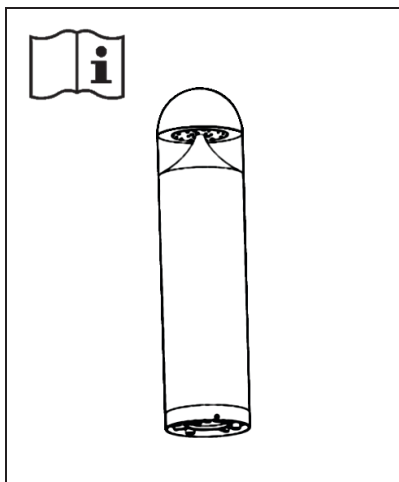
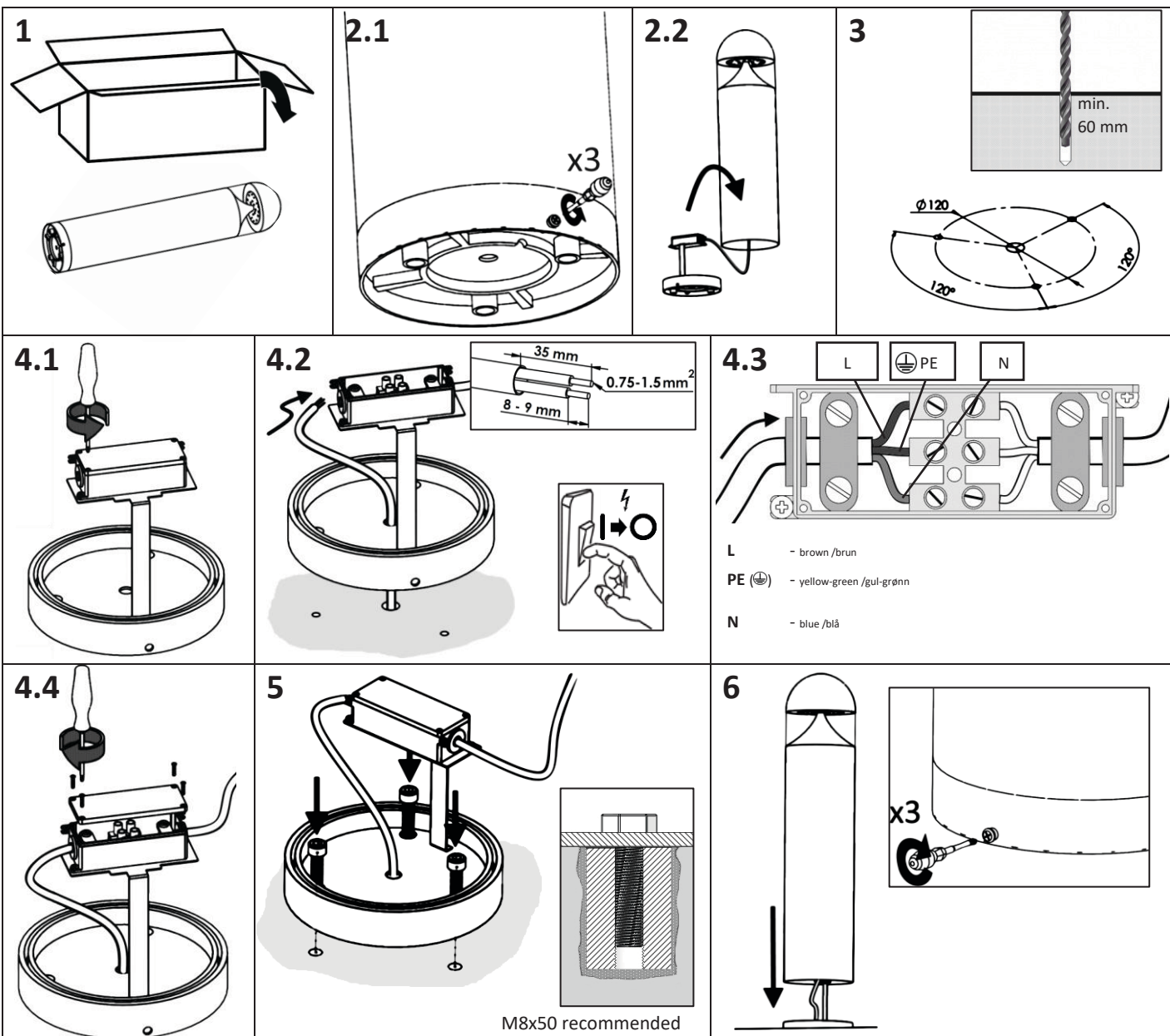
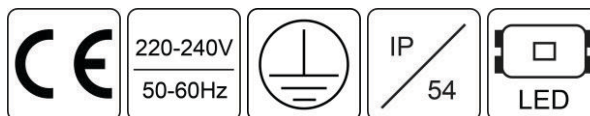


NIGEA

Installation manual



Please read and understand all of the directions, before starting luminaire installation. Keep this instruction for future use.

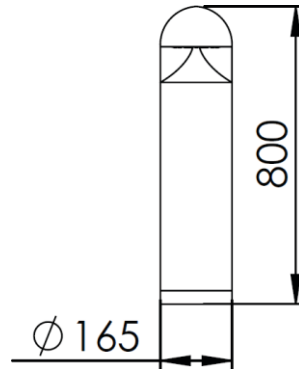


⚠ Safety Notes:

- Installation should only be done by qualified electrician.
- Make sure no voltage while installation

NORLUX®

Lighting Solutions



EN



CAUTION!

RISK OF ELECTRIC SHOCK

The light source contained in this luminaire shall only be replaced by the manufacturer or his service agent or a similar qualified person.

Installation can only be performed by an authorized electrician; Switch off the electricity supply before carrying out any work; Luminaire must be installed in compliance with all safety requirements; Attention! The exact model of the fixture marked on a label inside it.

DA



ADVARSEL!

RISIKO FOR ELEKTRISK
STØD

Lyskilden indeholdt i denne armatur må kun erstattes af fabrikanten eller hans servicemedarbejder eller en tilsvarende kvalificeret person.

Installation må kun udføres af en autoriseret elektriker; Sluk for strømforsyningen, inden du udfører arbejde. Armaturet skal installeres i overensstemmelse med alle sikkerhedskrav; Opmærksomhed! Den præcise model af armaturet mærket på etiketten inde i den.