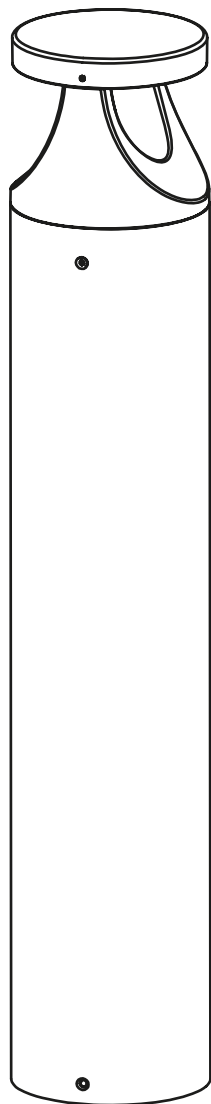


## ART. NO.

101155-01-20-500-1  
101155-01-20-900-1  
101150-01-10-500-1  
101150-01-10-900-1  
101150-01-20-500-1  
101150-01-20-900-1

**NORLUX®**

*Lighting Solutions*



# Arke Bollard

## INSTALLATION MANUAL



### ⚠ Safety Notes:

- The product must be installed, maintained, and operated as instructions below.
- Before starting installation of this product, make sure power supply is disconnected.
- Only to be installed by authorized electrician.
- Do not use abrasives or solvents when cleaning.
- Do not install the product if it appears damaged in any way. Check with manufacturer if in doubt.
- Do not modify this fitting in any matter as this will void warranty.
- Check protection class, if class I, it must be earthed.
- Disconnect power supply before maintenance or cleaning.

### ⚠ Sikkerhetsinformasjon:

- Følg installasjonsmanual for korrekt montering.
- Koble alltid fra strømmen før montering eller vedlikehold.
- Kan kun monteres av autorisert elektriker.
- Monter ikke produktet hvis det er synlig skade. Kontakt forhandler eller produsent.
- Bruk ikke løsemidler ved rengjøring
- Produktet skal ikke under noen omstendigheter endres eller modifiseres.
- Sjekk produktets isolasjonsklasse. Ved isolasjonsklasse I skal produktet jordes.

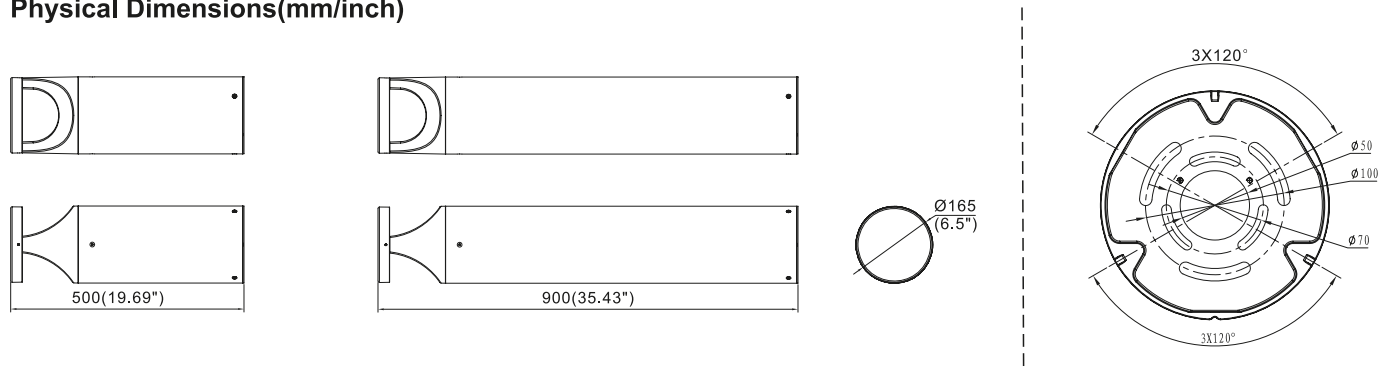
Packing List		
	Base plate templates	1PCS
	Screw fixing plate	1PCS
	Screw M5*16	5PCS
	Screw M8	3PCS
	Nut M8	3PCS

AC 100-240V / AC 220-240V  
AC/ 120-277V/ 50/60Hz

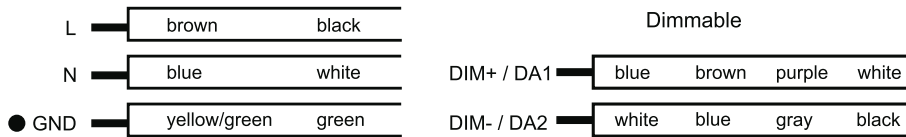
**0.9M**

**0.5M**

**Physical Dimensions(mm/inch)**

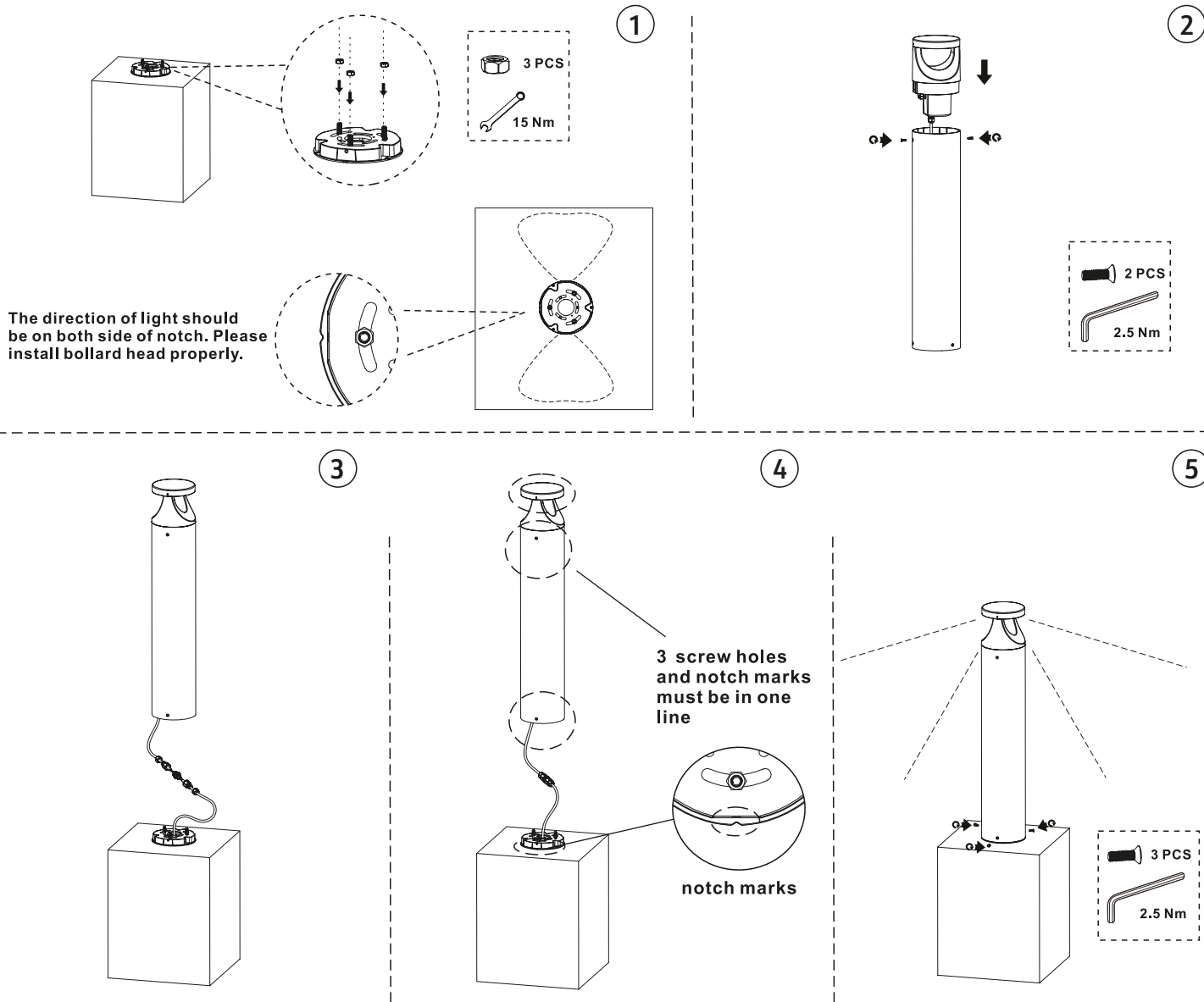


Product Specifications	10W		20W	
Input Voltage	AC 100-240 V/220-240V/120-277VAC			
Power Frequency	50 / 60 Hz			
Size(L x W x H)	Ø165×500mm (Ø6.5"×19.69")	Ø165×900mm (Ø6.5"×35.43")	Ø165×500mm (Ø6.5"×19.69")	Ø165×900mm (Ø6.5"×35.43")
Weight(Driver included)	4.5±0.3kg (9.92±0.66Lbs)	6.16±0.3kg (13.58±0.66Lbs)	4.5±0.3kg (9.92±0.66Lbs)	6.16±0.3kg (13.58±0.66Lbs)
Working Temperature	-30°C to + 50°C(-22°F to +122°F)			
Storing Temperature	-40°C to + 70°C(-40°F to +158°F)			



- This luminaire can be used outdoors.
- The light source contained in this luminaire shall only be replaced by the manufacturer or his service agent or a similar qualified person.
- If the external flexible cable or cord of this luminaire is damaged, it shall be exclusively replaced by the manufacturer or his service agent or a similar qualified person in order to avoid a hazard.

# Installation method 1

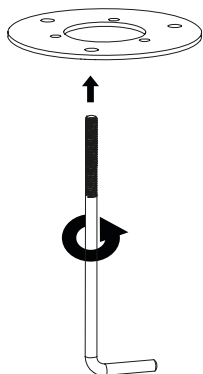


## MERK

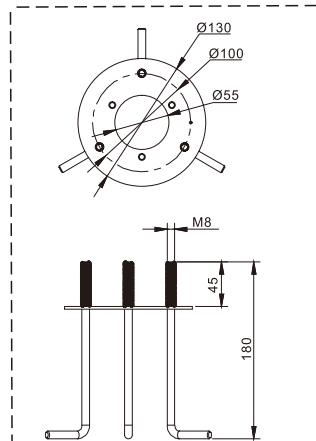
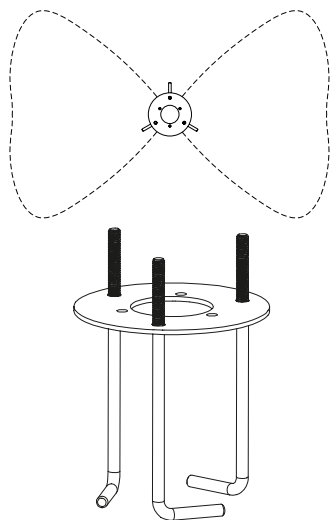
Ground Mounting Kit kjøpes separat  
(101150-02 Arke Bollard ground mounting kit)

# Installation method 2

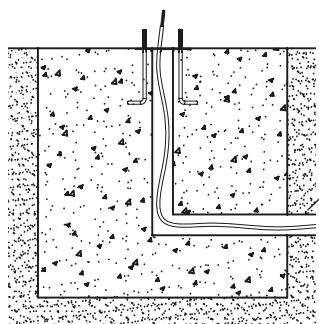
1



2



3



Hole Diameter:  
Ø30-55mm

Suggested cement  
column size

4

