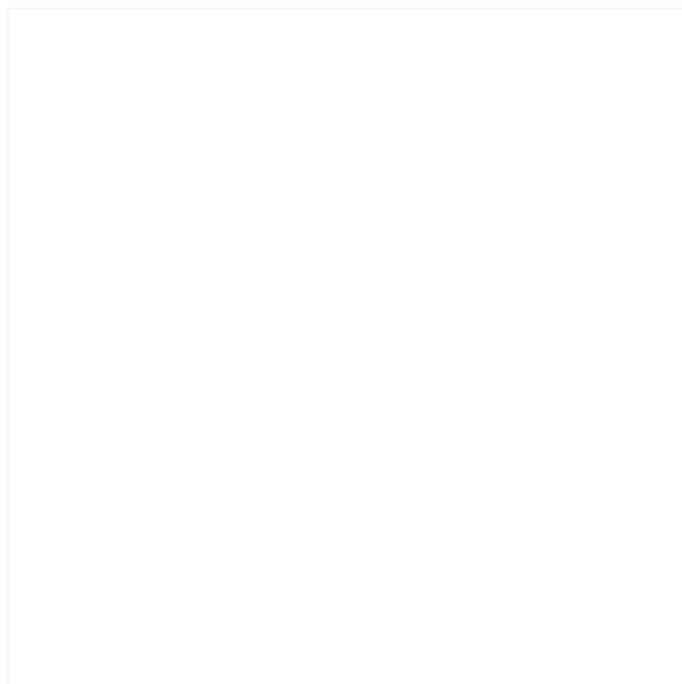
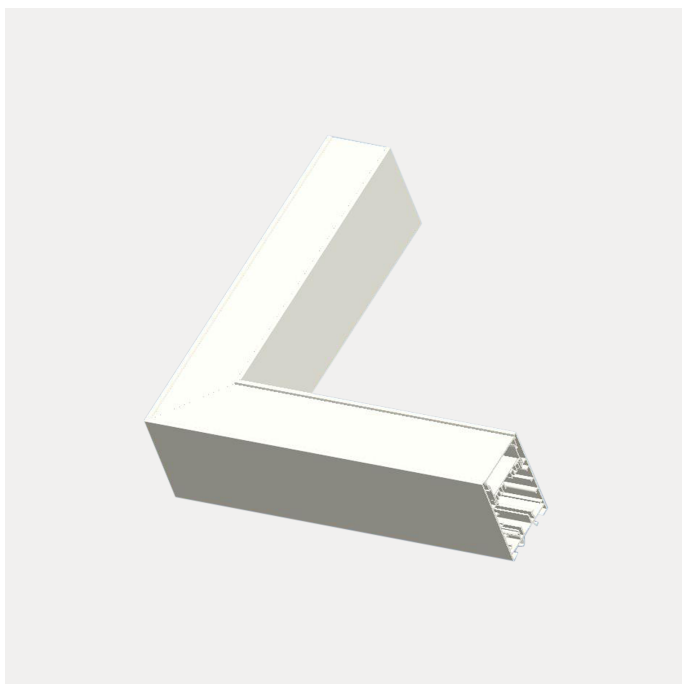




## FDV SPEC SHEET

Ledline

Art. no: 805010-2



## Ledline



Art. no: 805010-2

### LIGHT TECHNICAL

Lumen LED (tc=25):	2750
Beam Angle:	110
CCT (Color Temperature):	3000
CRI / Ra:	80
Color Code:	830
Lens (Diffuser):	Opal

### MOUNTING / CONNECTION

Connection:	LEDLine 5-pin
Mounting:	Pendant, Ceiling, Surface, Recessed

### PRODUCT

Ingress Protection:	IP40
Operating Temperature [°C]:	-
Color:	Black
Length [mm]:	600
Height [mm]:	84
Width [mm]:	600

### ELECTRICAL DATA

Dimming:	None
System Voltage [V]:	230V 50Hz
Protection Class:	2
Socket / Cap-Base:	N/A