



PRODUCT SHEET

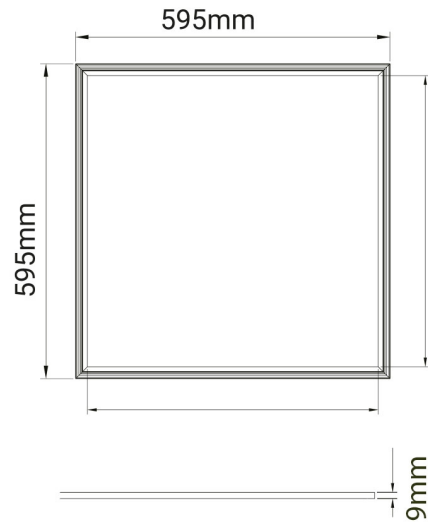
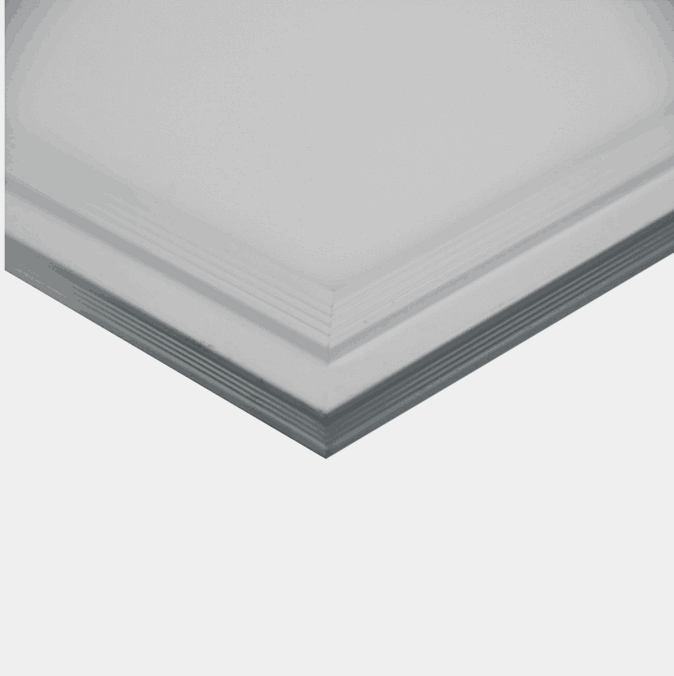
Panel

Art. no: 0380-01-3



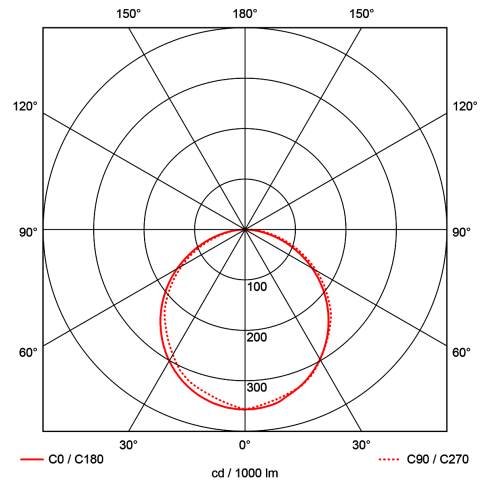
Lighting Solutions

Panel



SPECIFICATIONS

| | |
|--------------------------|---------------------|
| Lightsource Type: | LED (built in) |
| System Power [W]: | 56W |
| CCT (Color Temperature): | 4000K |
| CRI / Ra: | 80 |
| Lumen Output: | 6200lm |
| Lumen LED (tc=25): | 8300lm |
| Beam Angle: | 110° |
| Lens (Diffuser): | Opal |
| Dimming: | Depending on Driver |
| System Voltage [V]: | 230V 50Hz |
| Connection: | EPN0024 |
| Mounting: | Ceiling, Recessed |
| Lumen/W: | 109lm/W |
| UGR (<=): | 20 |
| Color: | White |
| Length [mm]: | 595mm |
| Height [mm]: | 9mm |
| Width [mm]: | 595mm |



Panel LED is a light fixture for interior use. It is constructed for fitting in to suspended ceilings. Panel LEDs can be installed as a pendant or mounted on ceiling surfaces. The Panel LED has an opal or micro prismatic diffuser. Choose between on/off, phasecut or DALI2 (CLO, Corridor, Push dim and Ready2mains) driver. See accessories for detailed information.