



Sivoia QS
Triathlon Shading
Solutions

**A fashionable, flexible, and reliable
automated shading system for any home**

 **LUTRON**

Sivoia QS Triathlon shading solutions

The most fashionable, flexible, and reliable automated shading system available today.

Sivoia QS Triathlon shades are available in two window treatment styles to meet all of your design needs.

The Lutron Difference

Why choose Sivoia QS Triathlon?

- Industry-leading battery performance
- Easy-to-change batteries
- Ultra-reliable wireless technology
- Quiet, precise movement
- Aesthetically pleasing, intuitive controls
- Seamless integration with Lutron whole-home control systems

Power options

- Choose from battery or wired powered shades

Styles

- Available in roller or insulating honeycomb shade styles in a wide variety of beautiful colours, fabrics, and textures



Roller shade



Roller — Monomer in Dusk

Insulating honeycomb shade



Honeycomb — Monaco Light-filtering, Single cell in Cloud

The benefits of Sivoia QS Triathlon shading solutions

Lutron Sivoia QS Triathlon shades offer incredible value, backed by the quality of the Lutron brand.

Add convenience

- Adjust shades with a wireless handheld or wall-mounted control from anywhere in the room
- A single button press adjusts hard-to-reach window treatments
- Cord-free design makes this solution safe for homes with young children or pets
- Lutron mobile app provides shade control via a mobile device, whether you're home or away



Roller — Hachure in Eggshell

Enhance your décor

- Choose from beautiful fabrics, colours, styles, and textures
- Give your room a crisp, clean look that complements many decorating styles



Roller — Monomer in Dusk

Save energy

- Lower shades in summer to insulate the space and help reduce cooling costs
- Raise shades in winter to let sun in during the day, then lower them at night to trap the day's heat, reducing heating costs
- Insulate your home effectively with the heat-trapping air pockets of insulating honeycomb shades, which enhance energy efficiency



Roller — Rio Light-filtering, Double cell in Storm

Integrate seamlessly

- Sivoia QS Triathlon shades are the only battery-powered shades available today that integrate seamlessly with a whole-home control system such as RA2 Select or HomeWorks
- Control your shades in conjunction with your lights — and transform your space for any activity
- Integrate your shades with other leading brands to enjoy the convenience of voice control

Refer to pages 12-13 for integration options



Roller — Bistre fabric in Nutmeg

Key applications for Sivoia QS Triathlon shades

Our shades are perfect for spaces where you want to add a touch of luxury or easily create privacy.



Roller – Mosaic in Seagrass

Family room

Visual appeal

Shade your space with style. Not only will your shades block glare, but they will operate in perfect unison and stay aligned with shades in adjacent windows.



Roller – Sheerlite 3% in Charcoal

Office space

Comfort and convenience

With your handheld remote, you can adjust the position of your shade to prevent heat-gain from midday sun.



Sivoia QS Triathlon roller shades

A contemporary and stylish window treatment that combines superior functionality with a clean and elegant aesthetic.



- Roller shades sizes available as wide as 3650 mm and as tall as 3650 mm
- Uses D-cell batteries
- Battery Boost is available to extend battery life up to 80% or up to 6 years
- Plug-in power options also available

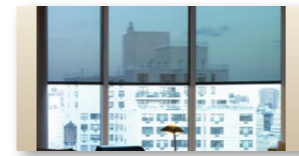
Shades are controlled with a Pico wireless control or integrated into a whole-home control system

Designer hembar style offers a clean aesthetic that complements the chic look of the roller shade panel

Choose the fascia option that meets your style needs

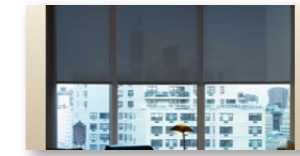
Fabric options

Shades are available in a wide variety of fabric colours and textures. Choose from sheer, translucent, and blackout fabrics.



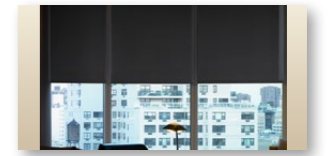
Sheer

- Open weaves preserve views to outside and filter sunlight
- Ideal for rooms where you don't need complete privacy



Translucent

- Tighter weaves transform harsh daylight into a soft, filtered glow
- Provides increased privacy for spaces like bathrooms



Blackout

- Opaque fabrics block light from entering the space
- Ideal for bedrooms and media rooms for complete privacy

Patented headrail design

Innovative headrail simply tips forward to reveal the battery tray — without taking the shade down



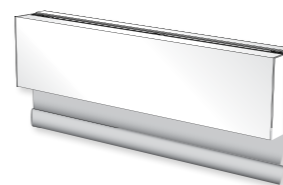
Tip down the headrail.



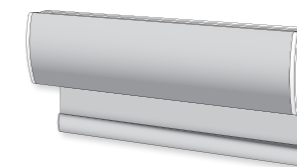
Change the batteries.

Top treatment options

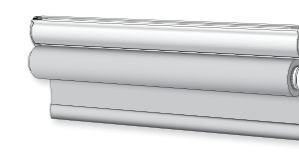
Sivoia QS Triathlon shades are available with three different top treatment options to tailor the solution for any space.



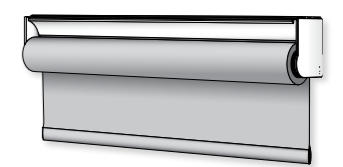
Architectural fascia



Fabric-wrapped fascia



Exposed headrail



Exposed headrail (for WIDR shades)

Sivoia QS Triathlon insulating honeycomb shades

A stylish, functional, automated shade that provides convenience, enhances your décor, and also saves energy.



- Insulating honeycomb shades available up to 2435 mm wide x 2435 mm tall
- Uses batteries
- Plug-in power options also available

Shades are controlled with a Pico wireless control, or integrated into a whole-home control system

Color-matched headrail can be installed on its own or paired with your own top treatment

Fabric options

Shades are available in different light transmittance options, as well as a variety of colours and textures.



Light-filtering - Single cell
Transform harsh daylight into a soft, filtered glow. Provide varying levels of privacy from the outside. Save energy with insulating fabric and design.



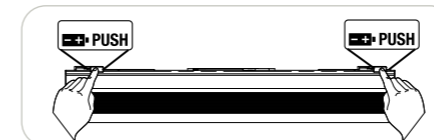
Light-filtering - Double cell
Allow some light to filter into the space. Save even more energy with double cell insulating design.



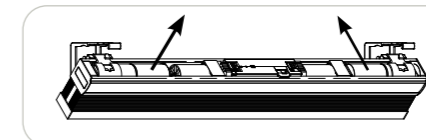
Room-darkening - Single cell
Block light from entering the space. Create complete privacy from the outside. Save the most energy due to aluminium lining.

Patented headrail design

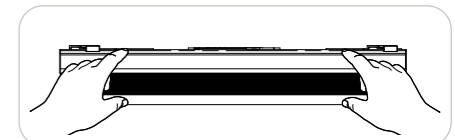
Our exclusive Tap n' Tilt technology makes changing the batteries a breeze, without ever removing the shades.



Simply press the release buttons, allowing the headrail to tilt forward.



Change the batteries.



And snap the headrail back in place.

Shade control options

Sivoia QS Triathlon shades can be integrated into a whole-home control system or used as a shade-only solution.

Shade-only solution

Pico wireless controls — You can mount this flexible, battery-operated control on a tabletop pedestal or to a wall (without cutting holes or running wire).

International



Whole-home control solutions

Sivoia QS Triathlon shades integrate with Lutron RA2 Select, and HomeWorks systems. With a system, you can control your shades from a keypad, through a timeclock or third-party integration, or from your mobile device.

Keypads and single-room scene controls

You can control system-integrated shades from wall-mounted or tabletop keypads or controls.

With one button press, you can dim your lights, adjust the temperature and turn on/off standby power to small appliances, creating an environment that's both comfortable and energy-efficient.

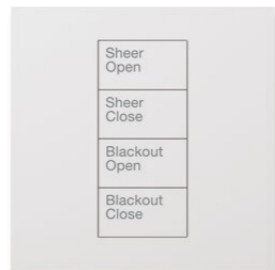
International



Pico scene keypads
Works with any residential system



seeTouch keypads
Works with HomeWorks systems

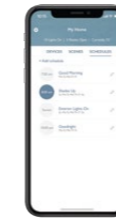


Palladiom keypads
Works with HomeWorks systems

Whole-home control solutions (cont'd)

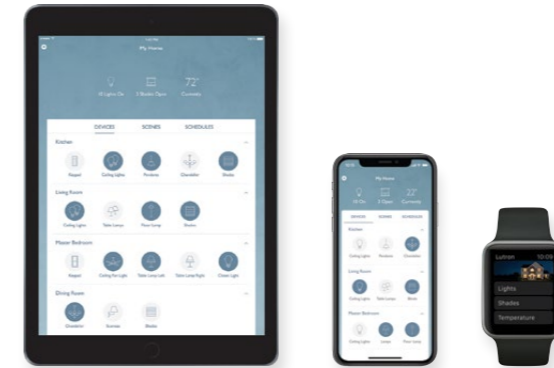
Timeclocks

A timeclock works in conjunction with a home-control system to automatically raise or lower your shades based on programmed times.



Mobile devices

If you have a Lutron home system, you can control your shades from your mobile device with a Lutron app — as well as lights, temperature, music, and standby power to small appliances — even when you're away from home.



Works with both Android™ and iOS devices.

Third-party integration

Integrate shades (as well as lights) with other manufacturers' systems to expand your smart home with voice, audio/visual, and security control — plus more.



Power options

Sivoia QS Triathlon shades can be powered by batteries, plug-in power supplies, or power panels. Coordinating manual shades are also available.



Batteries

Batteries are a cost-effective option that guarantee easy maintenance. Battery-powered shades are the best choice for applications that require a wire-free solution (such as French doors), making these shades ideal for any phase of the construction or renovation process.



Power panels

A power panel can be used to power up to 10 shades, and is ideal for installations during renovation or new construction. Shades are wired directly to the panel and don't use batteries.



Cordless manual options

Manual options are available to coordinate with all of your automated window treatments.

Sivoia QS Triathlon

Superior shading system designed to outperform



Simple power options



Instant digital response



Precision hybrid drive



Synergistic performance

Simple power options — Makes installing shades easy and affordable — even if you can't pull wires.

Instant digital response — Immediate reliable response to RF system commands, even with battery-powered shades. Shade returns to Eco mode when not in use to preserve power and minimise vampire loads.

Precision hybrid drive — Combines low power requirements with stored energy to move shade while maintaining precision alignment for superior aesthetics.

Synergistic performance — Triathlon combines these three elements to deliver the most reliable, power-efficient shading system available today.

The Lutron Difference

When you choose Lutron, you're choosing a manufacturer with a history of innovation — and the leader in the automated shading category since 2003. So when you purchase our Sivoia QS Triathlon shades you can be confident you're getting a quality product, backed by our commitment to reliability (we offer 24/7 customer support).

Sivoia QS Triathlon shades offer:

- Incredible value and a beautiful solution at an affordable price
- Cutting-edge technology

Clear Connect RF Technology

Lutron's patented Clear Connect RF technology sets the bar for reliability. You can trust your system will work with precision and accuracy, free from interference with other frequency bands, every time you use it.



Sivoia QS **Triathlon**

European Headquarters

Lutron EA Ltd. 4th Floor, 52 Leadenhall Street London EC3A 2EB, UK

European Experience Centre and registered address: 4th Floor, 125 Finsbury Pavement London EC2A 1NQ, UK

Freephone: 0800 282 107
TEL: +44 (0) 207 702 0657
FAX: +44 (0) 207 480 6899
eacs@lutron.com

Lutron is a trademark of Lutron Electronics Co., Inc., registered in the U.S. and other countries. For a complete list of all Lutron registered and common law trademarks, please visit lutron.com/trademarks. Android is a trademark of Google Inc. Works with Sonos is a trademark of Sonos Inc.

© 09/2020 Lutron Electronics Co., Inc. | P/N 367-2208/EA REV M

