



PRODUCT SHEET

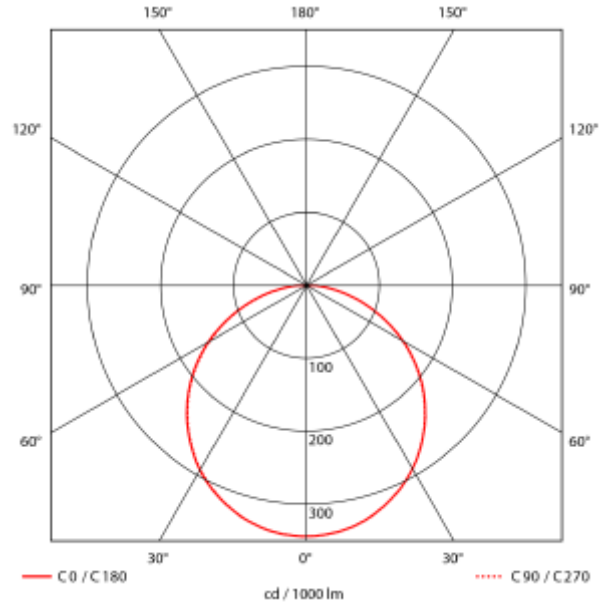
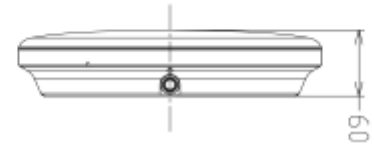
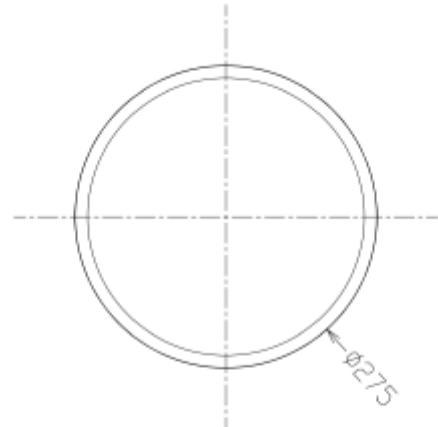
Celestial Plafond

Art. no: 101570-120-3-p



Lighting Solutions

Celestial Plafond



All data is based on 3000K.



SPECIFICATIONS	
Lightsource Type:	LED (built in)
System Power [W]:	12W
CCT (Color Temperature):	2700-3000K
CRI / Ra:	80
Lumen Output:	1350lm
Lumen LED (tc=25):	1500lm
Beam Angle:	120°
Lens (Diffuser):	Opal
Dimming:	Phase-Cut
System Voltage [V]:	230V 50Hz
Connection:	QuickConnect
Mounting:	Wall, Ceiling
Lifetime [h]:	L80B10: 100 000h
Lumen/W:	112lm/W
MacAdam (SDCM):	3
Color:	White
Height [mm]:	60mm
Width [mm]:	275mm
Weight [kg]:	0,75kg