



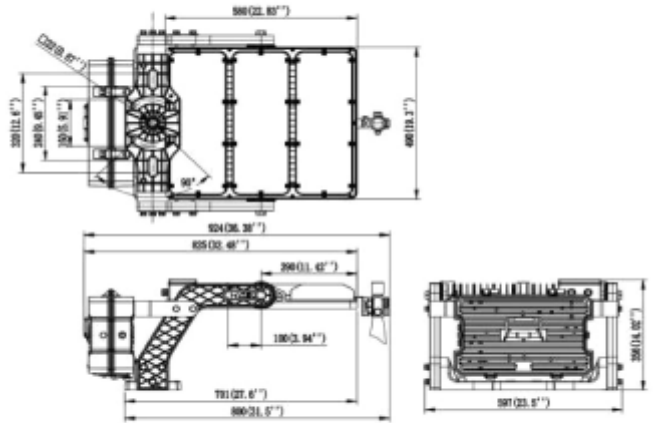
## FDV SPEC SHEET

X-Flood

Art. no: 101313-02-2-ddd



Lighting Solutions



# X-Flood



Art. no: 101313-02-2-ddd

### LIGHT TECHNICAL

Lightsource Type:	LED (built in)
Lumen Output:	175200
Lumen LED (tc=25):	175200
CCT (Color Temperature):	4000
CRI / Ra:	70

### PRODUCT

Ingress Protection:	IP66
Impact Protection:	IK08
Wind force (EPA) [m2] at 0°:	0,39
Operating Temperature [°C]:	-30 - 40
Lifetime [h]:	L80B10: 100 000
Color:	Black
Length [mm]:	700
Height [mm]:	510
Width [mm]:	145
Weight [kg]:	33
Housing Material :	Aluminium

### ELECTRICAL DATA

Dimming:	DALI2
System Power [W]:	1200
System Voltage [V]:	230V 50Hz
Protection Class:	1

### MOUNTING / CONNECTION

Connection:	Terminal
Mounting:	Wall, Mast