



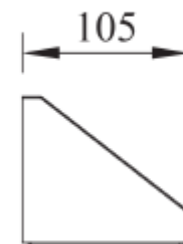
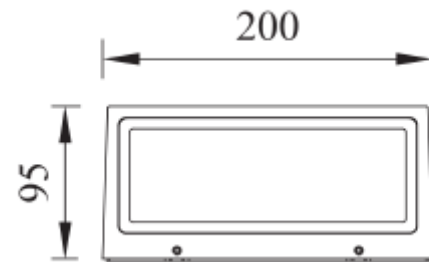
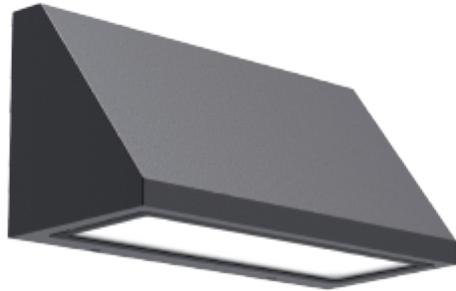
## FDV SPEC SHEET

Caro G2 900lm 830 112° 9W BK IP65

Art. no: 102571-112-2



Lighting Solutions



# Caro G2 900lm 830 112° 9W BK IP65



Art. no: 102571-112-2

### LIGHT TECHNICAL

Lightsource Type:	LED (replaceable)
Lumen Output:	927
Lumen LED (tc=25):	1000
Beam Angle:	112°
CCT (Color Temperature):	3000
CRI / Ra:	80
Color Code:	830
MacAdam (SDCM):	3
Lens (Diffuser):	N/A
UGR (<=):	17

### MOUNTING / CONNECTION

Connection:	Terminal
Cut-out [mm]:	N/A
Mounting:	Surface, Wall



## FDV SPEC SHEET

Caro G2 900lm 830 112° 9W BK IP65

Art. no: 102571-112-2



*Lighting Solutions*

PRODUCT	
Ingress Protection:	IP65
Impact Protection:	IK06
Corrosion Class:	C4
Operating Temperature [°C]:	-30 - 45
Lifetime [h]:	L80B10: 100 000
Color:	Black
RAL:	RAL9005
Length [mm]:	200
Height [mm]:	93
Width [mm]:	105
Weight [kg]:	0,85

ELECTRICAL DATA	
Dimming:	None
Flickerfree:	Yes
Flicker metric (Pst LM) <:	1
Stroboscopic effect metric (SVM) <	1
System Power [W]:	9
System Voltage [V]:	230V 50Hz
Protection Class:	1
Max load pr circuit - B10:	75
Max load pr circuit - B16:	125
Max load pr circuit - C10:	90
Max load pr circuit - C16:	140
Leakage current [mA]:	1
Inrush current I <sub>max</sub> [A]:	1
Inrush current time [μs]:	3600
Socket / Cap-Base:	N/A
Current Output [mA]:	150
Voltage Forward Min [V]:	26
Voltage Forward Max [V]:	43
Emergency light [h]:	No Emergency light
Emergency light testing:	N/A