



FDV SPEC SHEET

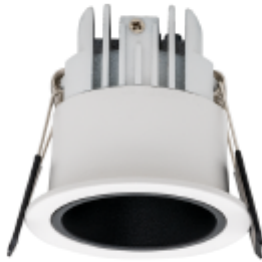
Cilla Micro

Art. no: 102710-24-3



Lighting Solutions

Cut-out: Ø45



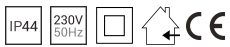
60

58,5



Ø55

Cilla Micro



Art. no: 102710-24-3

LIGHT TECHNICAL

Lightsource Type:	LED (built in)
Lumen Output:	500
Lumen LED (tc=25):	900
Beam Angle:	24°
CCT (Color Temperature):	2700
CRI / Ra:	95
Color Code:	927
MacAdam (SDCM):	3
Lens (Diffuser):	Lens

MOUNTING / CONNECTION

Connection:	Depending on driver
Cut-out [mm]:	45mm
Mounting:	Recessed

ELECTRICAL DATA

UGR (<=):	19
Dimming:	Depending on Driver
Flickerfree:	Yes
System Power [W]:	5
System Voltage [V]:	230V 50Hz
Protection Class:	2
Socket / Cap-Base:	N/A
Current Output [mA]:	350
Voltage Forward Max [V]:	18
Emergency light [h]:	No Emergency light



FDV SPEC SHEET

Cilla Micro

Art. no: 102710-24-3



Lighting Solutions

PRODUCT

To be recessed in insulation:	No
Ingress Protection:	IP44
Impact Protection:	IK02
Operating Temperature [°C]:	-20 - 45
Lifetime [h]:	L80B10: 100 000
Color:	White
RAL:	RAL9010
Length [mm]:	55
Height [mm]:	60
Width [mm]:	55
Diameter [mm]:	55
Weight [kg]:	0,22
Housing Material :	Aluminium
Diffuser Material:	PMMA
Material 2:	Srpings