



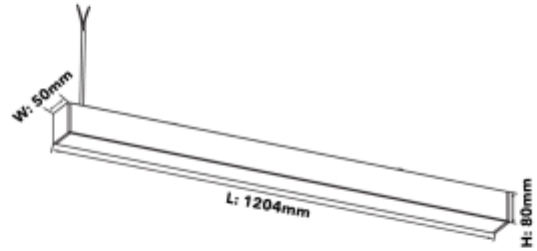
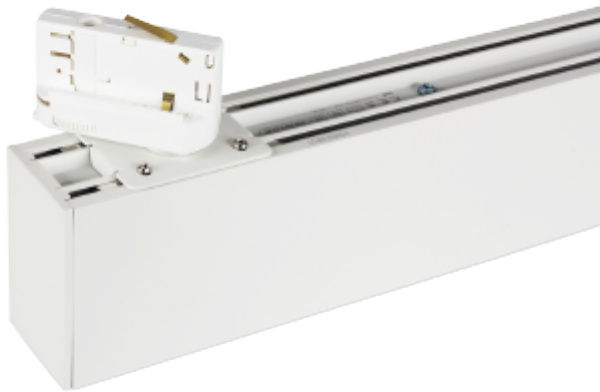
FDV SPEC SHEET

Linear

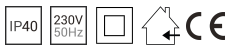
Art. no: 19041-02-3



Lighting Solutions



Linear



Art. no: 19041-02-3

LIGHT TECHNICAL

Lightsource Type:	LED (built in)
Lumen LED (tc=25):	4300
Beam Angle:	110°
CCT (Color Temperature):	30/35/4000K
CRI / Ra:	80
Color Code:	830/835/840
Lens (Diffuser):	Opal

MOUNTING / CONNECTION

Connection:	Track 3-Circuit
Mounting:	Track, Ceiling

PRODUCT

Ingress Protection:	IP40
Impact Protection:	IK08
Color:	White
Length [mm]:	1204
Height [mm]:	140
Width [mm]:	50
Weight [kg]:	3,5

ELECTRICAL DATA

Dimming:	None
System Power [W]:	36
System Voltage [V]:	230V 50Hz
Protection Class:	2
Max load pr circuit - B10:	23
Max load pr circuit - B16:	39
Max load pr circuit - C10:	38
Max load pr circuit - C16:	64
Leakage current [mA]:	0,7
Inrush current I _{max} [A]:	58
Inrush current time [µs]:	15
Socket / Cap-Base:	N/A