



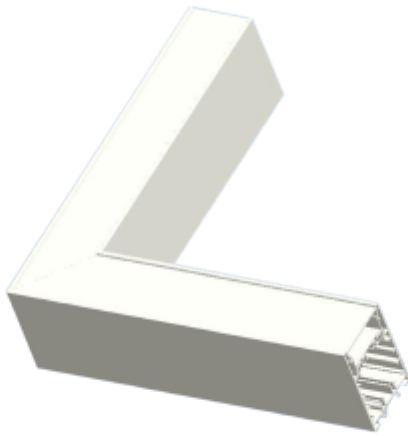
## FDV SPEC SHEET

Ledline

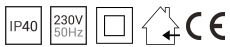
Art. no: 805010-3



Lighting Solutions



# Ledline



Art. no: 805010-3

### LIGHT TECHNICAL

Lightsource Type:	LED (built in)
Lumen LED (tc=25):	2750
Beam Angle:	110
CCT (Color Temperature):	3000
CRI / Ra:	80
Color Code:	830
Lens (Diffuser):	Opal

### MOUNTING / CONNECTION

Connection:	LEDLine 5-pin
Mounting:	Recessed, Surface, Ceiling, Pendan

### PRODUCT

Ingress Protection:	IP40
Lifetime [h]:	L80B10: 100 000
Color:	White
Height [mm]:	84
Width [mm]:	56

### ELECTRICAL DATA

Dimming:	None
Standby power Psb (W) <:	Skjult
Flicker metric (Pst LM) <:	Skjult
Stroboscopic effect metric (SVM) <:	Skjult
System Voltage [V]:	230V 50Hz
Protection Class:	2
Socket / Cap-Base:	N/A