



PRODUCT SHEET

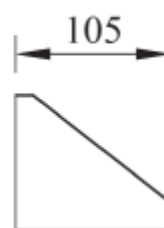
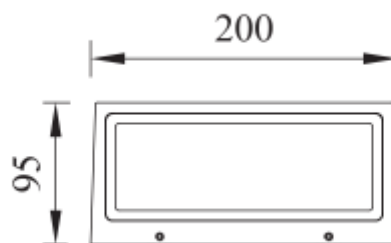
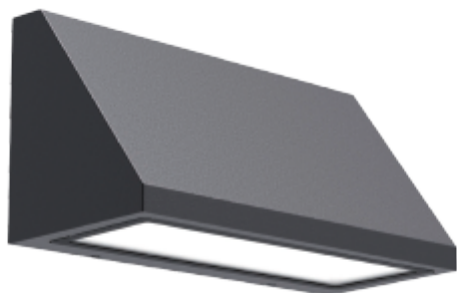
Caro G2 1000lm 830 112° 9W BK IP65

Art. no: 102571-112-2

NORLUX®

Lighting Solutions

Caro G2 1000lm 830 112° 9W BK IP65



SPECIFICATIONS

| | |
|--------------------------|--------------------|
| Lightsource Type: | LED (replaceable) |
| System Power [W]: | 9W |
| CCT (Color Temperature): | 3000K |
| CRI / Ra: | 80 |
| Lumen Output: | 1260lm |
| Lumen LED (tc=25): | 1400lm |
| Beam Angle: | 112° |
| Lens (Diffuser): | N/A |
| Dimming: | None |
| Flickerfree: | Yes |
| System Voltage [V]: | 230V 50Hz |
| Connection: | Terminal |
| Mounting: | Surface, Wall |
| Cut-out [mm]: | N/Amm |
| Lifetime [h]: | L80B10: 100 000h |
| Lumen/W: | 126lm/W |
| UGR (<=): | 17 |
| MacAdam (SDCM): | 3 |
| Color: | Black |
| Length [mm]: | 200mm |
| Height [mm]: | 93mm |
| Width [mm]: | 105mm |
| Weight [kg]: | 0,85kg |
| Emergency light [h]: | No Emergency light |
| Emergency light testing: | N/A |

