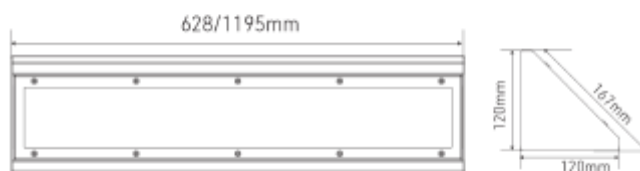
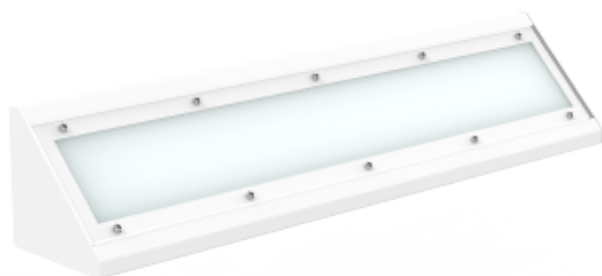




FDV SPEC SHEET

Proofsafe D

Art. no: 102973-120-3



Proofsafe D



Art. no: 102973-120-3

LIGHT TECHNICAL

Lightsource Type:	LED (replaceable)
Lumen Output:	4710
Lumen LED (tc=25):	4700
Beam Angle:	105°
CCT (Color Temperature):	3000
CRI / Ra:	80
Color Code:	830
MacAdam (SDCM):	3
Lens (Diffuser):	Opal
UGR (<=):	25

ELECTRICAL DATA

Dimming:	None
Flickerfree:	Yes
Flicker metric (Pst LM) <:	1
Stroboscopic effect metric (SVM) <	0,4
System Power [W]:	36/30/25/21
Preset Power [W]:	36
System Voltage [V]:	230V 50Hz
Protection Class:	1
Max load pr circuit - B10:	15
Max load pr circuit - B16:	24
Max load pr circuit - C10:	25
Max load pr circuit - C16:	40
Leakage current [mA]:	0,7
Inrush current I _{max} [A]:	18,1
Inrush current time [μs]:	226
Socket / Cap-Base:	N/A
Current Output [mA]:	35



FDV SPEC SHEET

Proofsafe D

Art. no: 102973-120-3



PRODUCT	
Ingress Protection:	IP65
Impact Protection:	IK10++
Operating Temperature [°C]:	-20 - 40
Lifetime [h]:	L80B10: 100 000
Color:	White
RAL:	RAL9016
Length [mm]:	1195
Height [mm]:	120
Width [mm]:	120
Weight [kg]:	6,56

MOUNTING / CONNECTION	
Connection:	Quickconnectx2
Mounting:	Surface, Wall, Ceiling