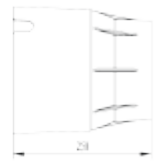
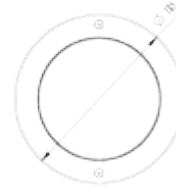




## FDV SPEC SHEET

Heka 1050lm 830 30° 15W Brushed Steel Phasecut  
Art. no: 2560-30-1



# Heka 1050lm 830 30° 15W Brushed Steel Phasecut



Art. no: 2560-30-1

### LIGHT TECHNICAL

Lumen LED (tc=25):	1050
Beam Angle:	30°
CCT (Color Temperature):	3000
CRI / Ra:	80
Color Code:	830
MacAdam (SDCM):	3
Lens (Diffuser):	Clear

### MOUNTING / CONNECTION

Connection:	Cable 2m
Mounting:	Ground, Recessed

### PRODUCT

Ingress Protection:	IP67
Impact Protection:	IK10
Operating Temperature [°C]:	-20 - 50
Color:	Brushed Steel
Height [mm]:	250
Width [mm]:	230
Weight [kg]:	3,5

### ELECTRICAL DATA

Dimming:	Phase-Cut
System Power [W]:	15
System Voltage [V]:	230V 50Hz
Protection Class:	1
Max load pr circuit - B10:	49
Max load pr circuit - B16:	80
Max load pr circuit - C10:	80
Max load pr circuit - C16:	135
Leakage current [mA]:	5
Inrush current I <sub>max</sub> [A]:	80
Inrush current time [µs]:	350
Socket / Cap-Base:	N/A