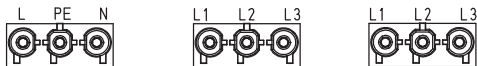


Safety instructions

Not permitted:



Permitted:

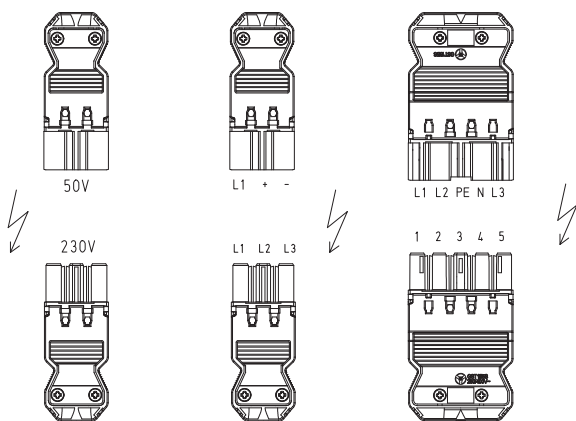
230V



50V

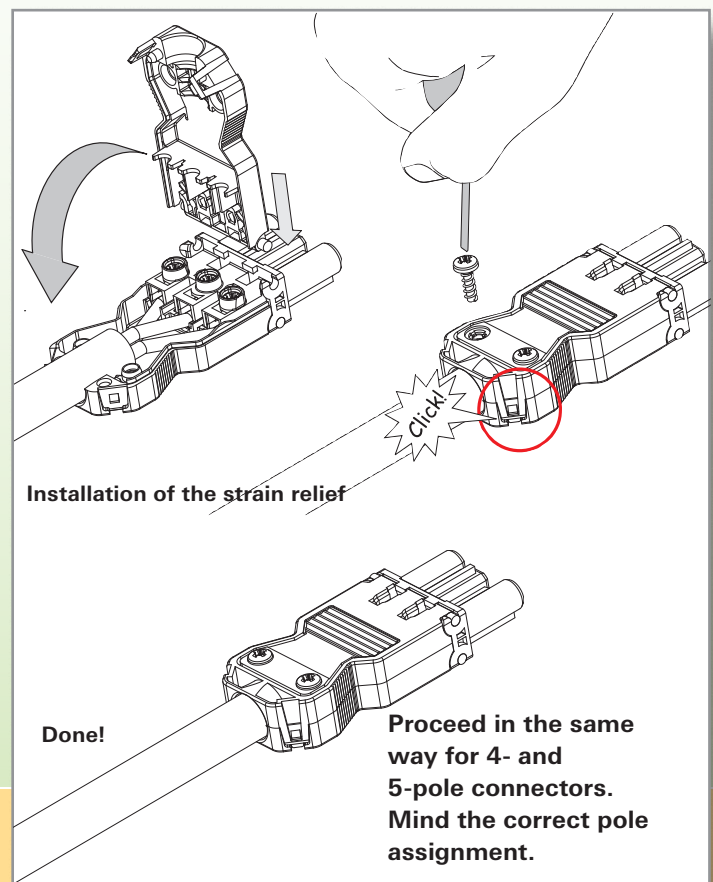
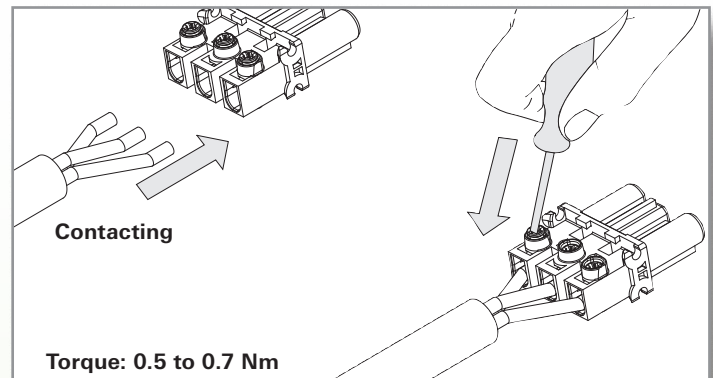


Not permitted:



GST18i3...i6 connector installation instructions.

Plug connector with screw connection



GST18i3...i6 connector installation instructions.

Plug connector with screw connection

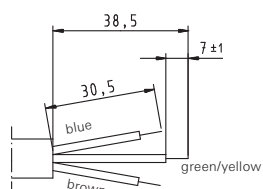
Preparing the conductors

All dimensions in mm.

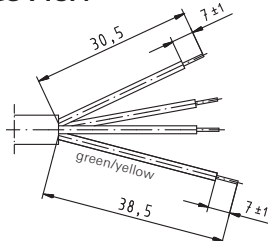
Solid or fine-stranded 0.75 – 2.5 mm² wires, high strain relief for up to 4 mm², without ferrule

Low strain relief

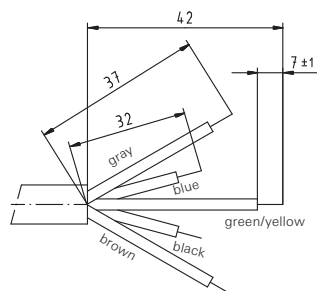
GST18i3



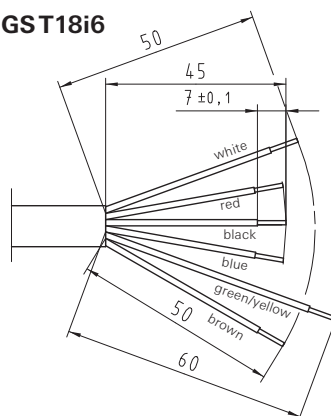
GST18i4



GST18i5

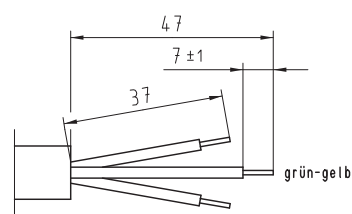


GST18i6

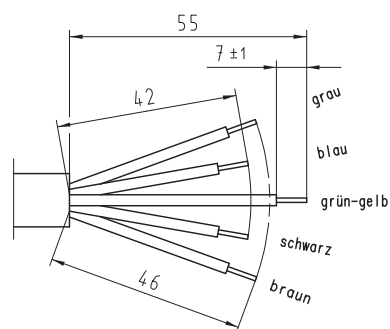


High strain relief

GST18i3



GST18i5

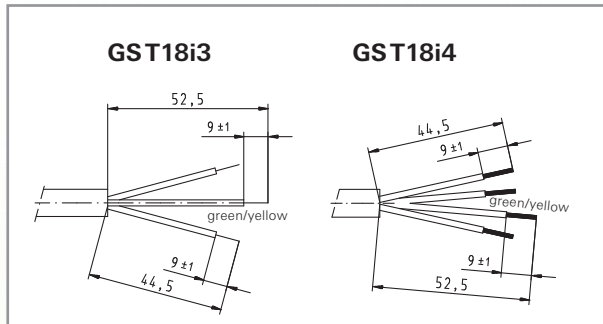


Spring-loaded plug connectors One cable

Preparing the conductors, all dimensions in mm.

Solid 1.5 – 2.5 mm² wires

Fine-stranded 1.5 mm² wires with ferrule

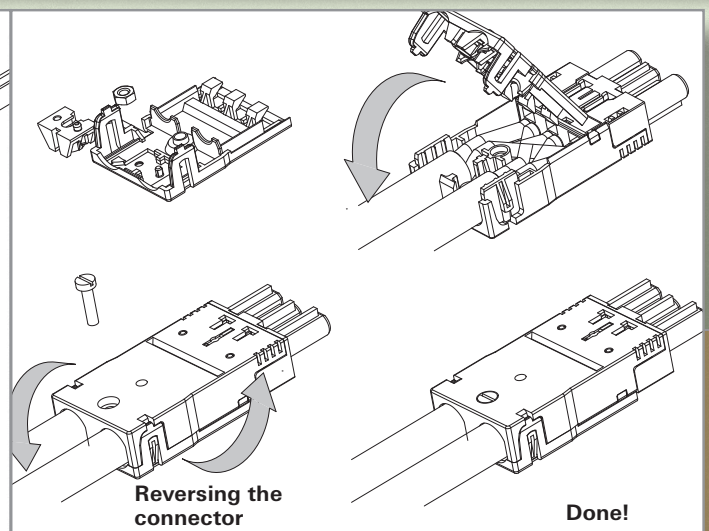
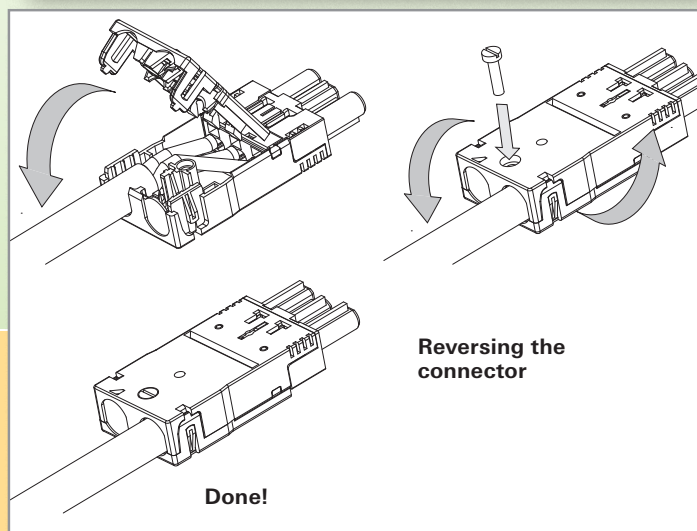
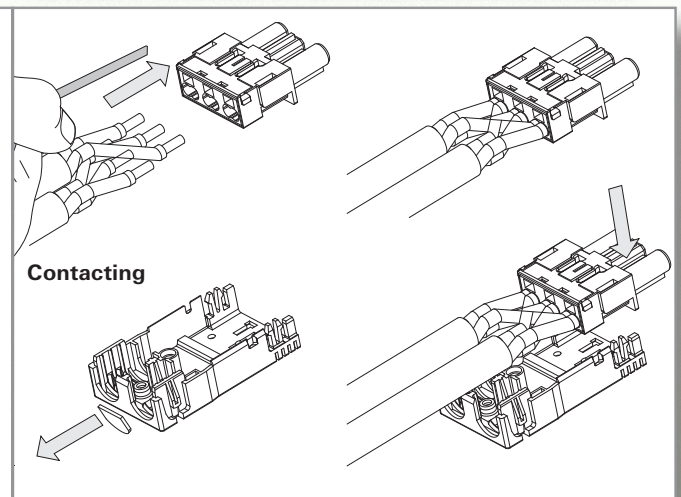
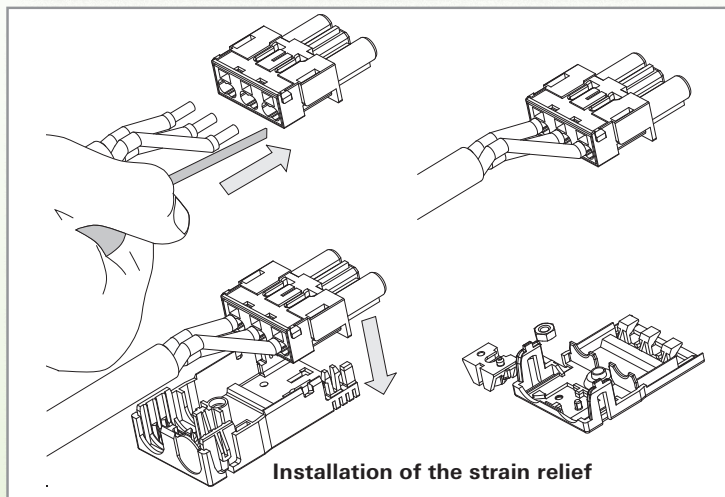
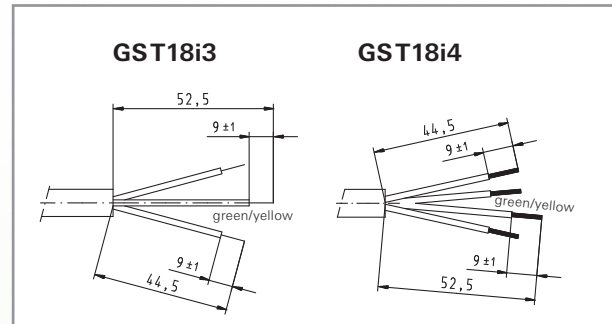


Spring-loaded plug connectors Two cables

Preparing the conductors, all dimensions in mm.

Solid 1.5 – 2.5 mm² wires

Fine-stranded 1.5 mm² wires with ferrule

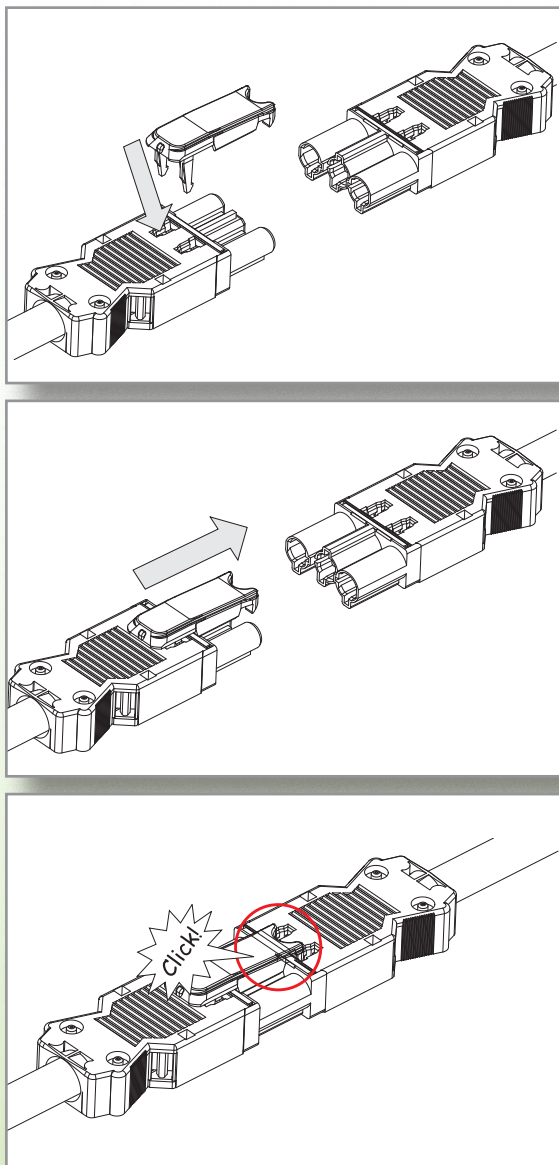


Proceed in the same way for 4-pole connectors.
Mind the correct pole assignment.

GST18i3...i6 installation instructions

Screw connection / spring-loaded connection interlock

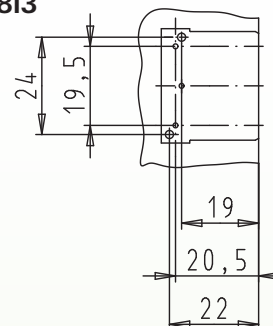
(proceed in the same way for distributors, snap-ins, and soldered parts)



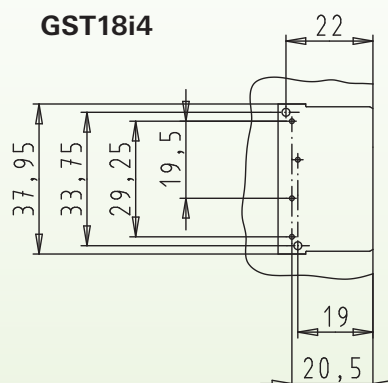
Soldered parts

GST 18 drilling plans

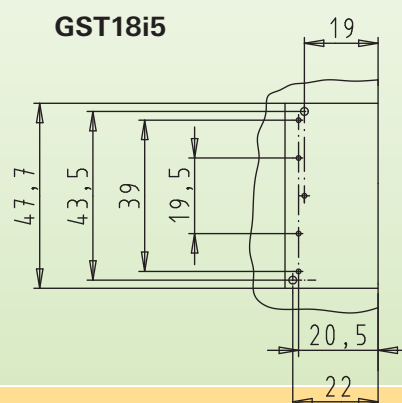
GST18i3



GST18i4



GST18i5



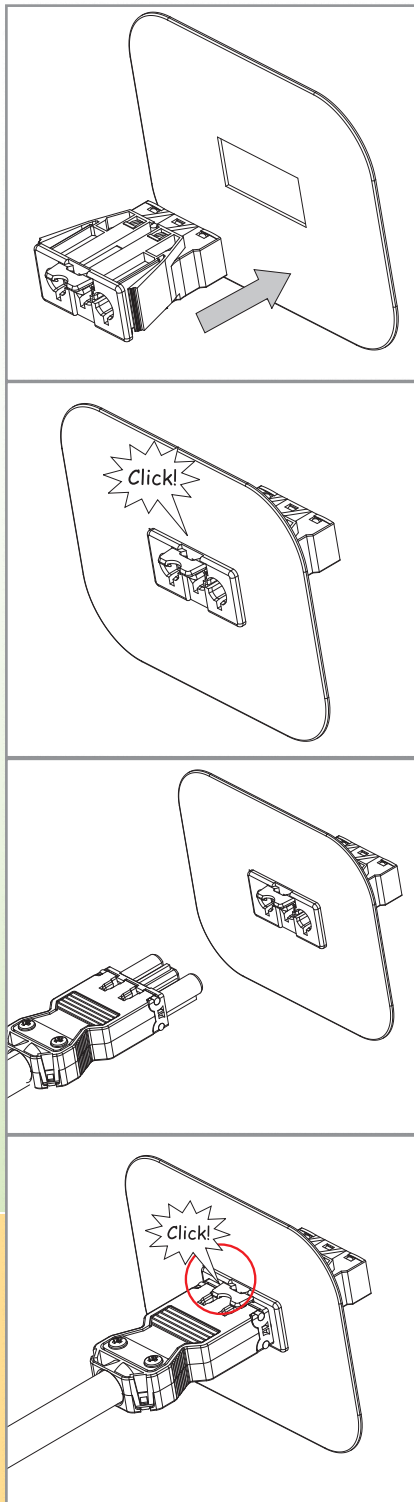
Please note:

To release locked flying leads, distributors, snap-ins, device connectors, and soldered parts, raise the interlock using a suitable flat screwdriver and disconnect the connector.

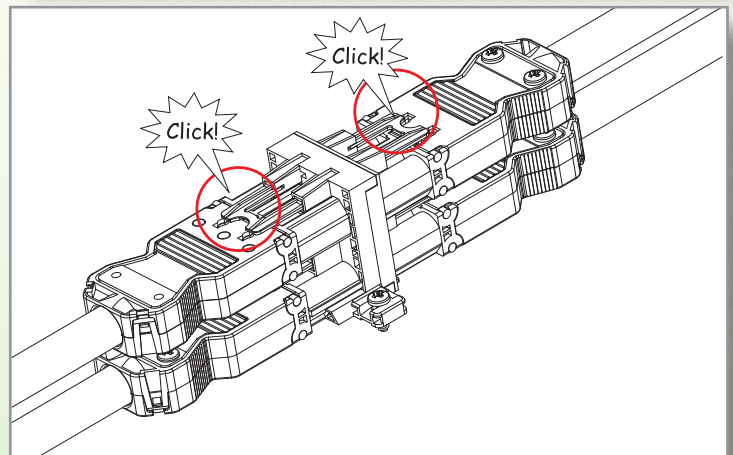
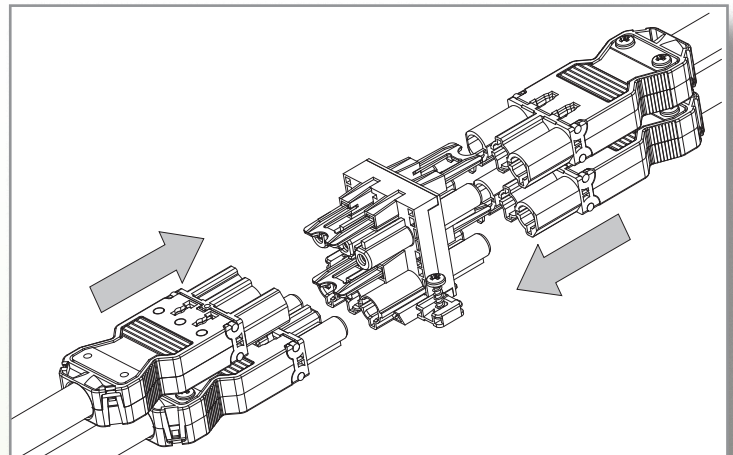
GST18i3...i6 installation instructions

Snap-in installation

Insulation strip length 0.5 - 1.5 mm²: 8 mm
 Insulation strip length 2.5 mm²: 9 mm
 Identical for device connectors



Use of distribution blocks



Please note:

In h and T distributors, one output each does **not** have an interlocking device.

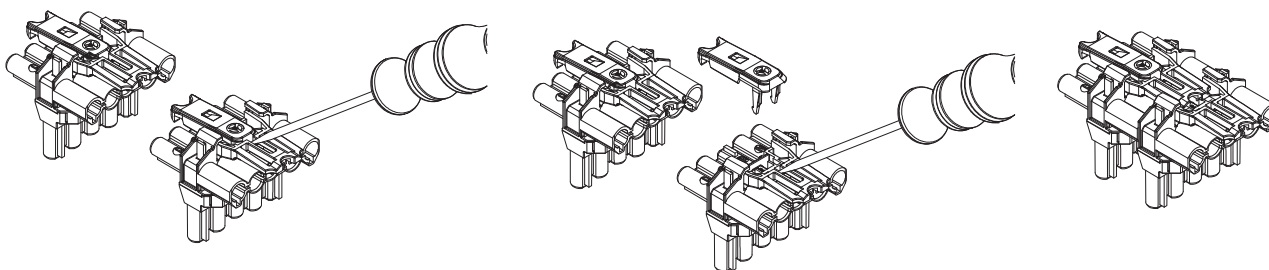
This output is used for plugging directly into device connectors. If you use this output for a cable assembly, for example, a separate interlocking device (accessory) must be used.

NOTE: For a plug connector that is not enclosed, protection against electric shocks is provided by the housing of the equipment in which the connector is installed, in accordance with the applicable product safety standard.

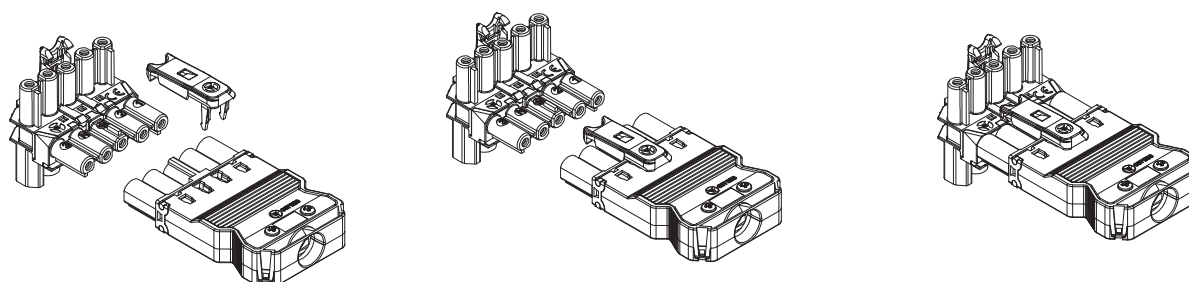


GST18i3...i6 installation instructions

Cascading, prior removal of the slidelock, with screwdriver

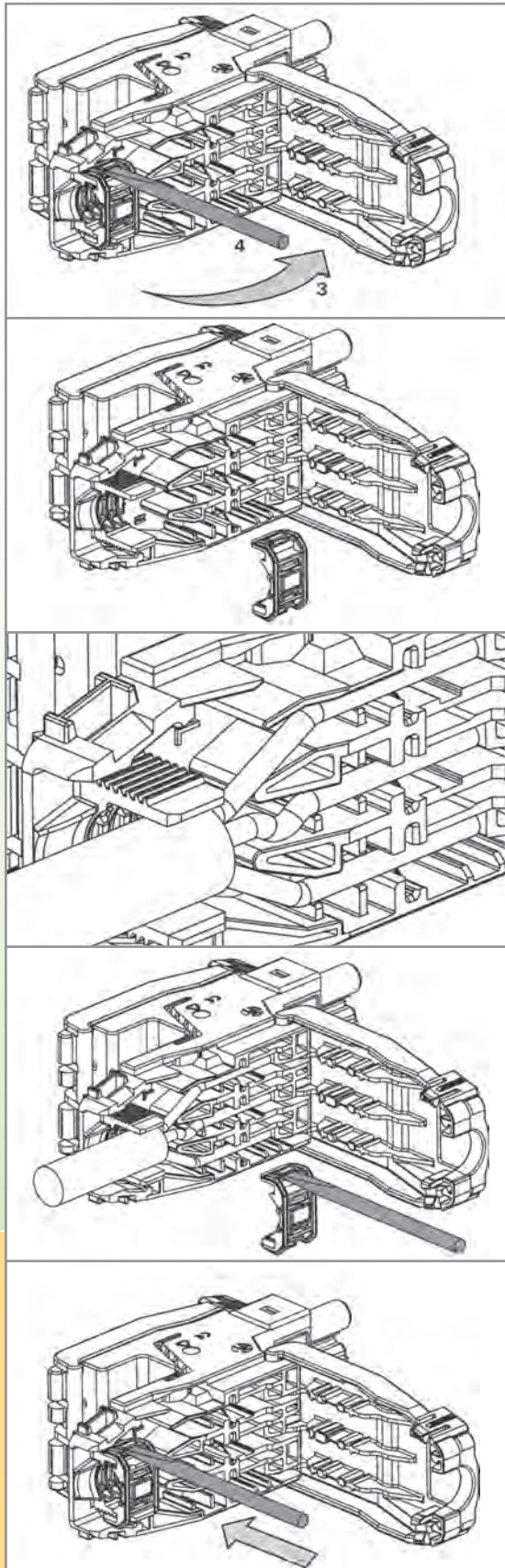


Use with field connection piece at the lower output, additional slidelock



GST18i3 installation instructions

IDC adapter assembly instruction



1. Cut cable at the desired point
2. Strip both ends of the cable by 35 mm
3. Open the cover
4. Undo the strain relief using a screwdriver

5. Insert conductors into guide slots
(mind the correct pole assignment!)

Detail

6. Insert the strain relief
Press firmly into place with a screwdriver

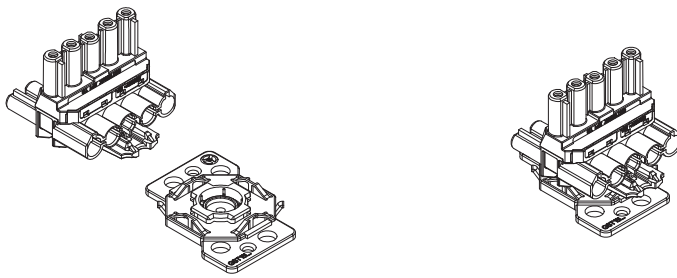


7. Close the cover
8. Repeat the above steps on the back of the adapter
9. Connect the GST 18i3 cable, use the interlocking device

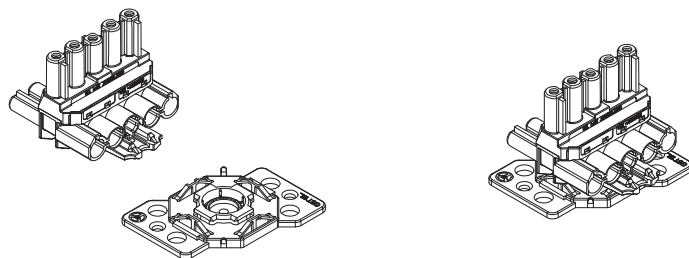
GST18i5 distribution unit mounting plate

Mounting plate with screws

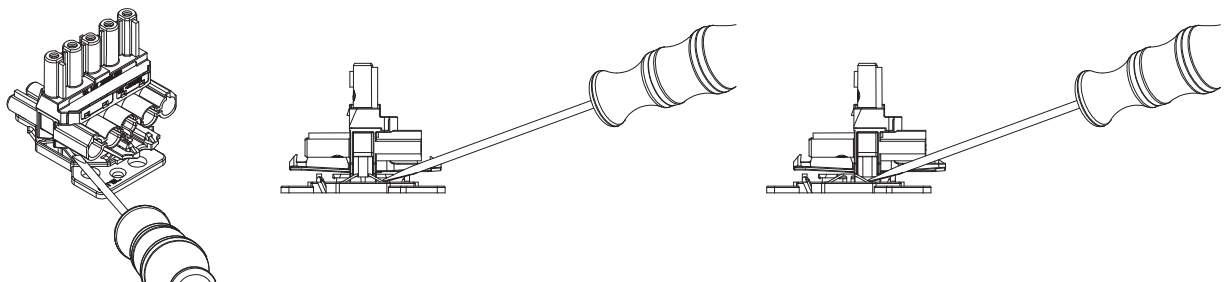
Assembly on mounting plate, direction 1



Assembly on mounting plate, direction 2

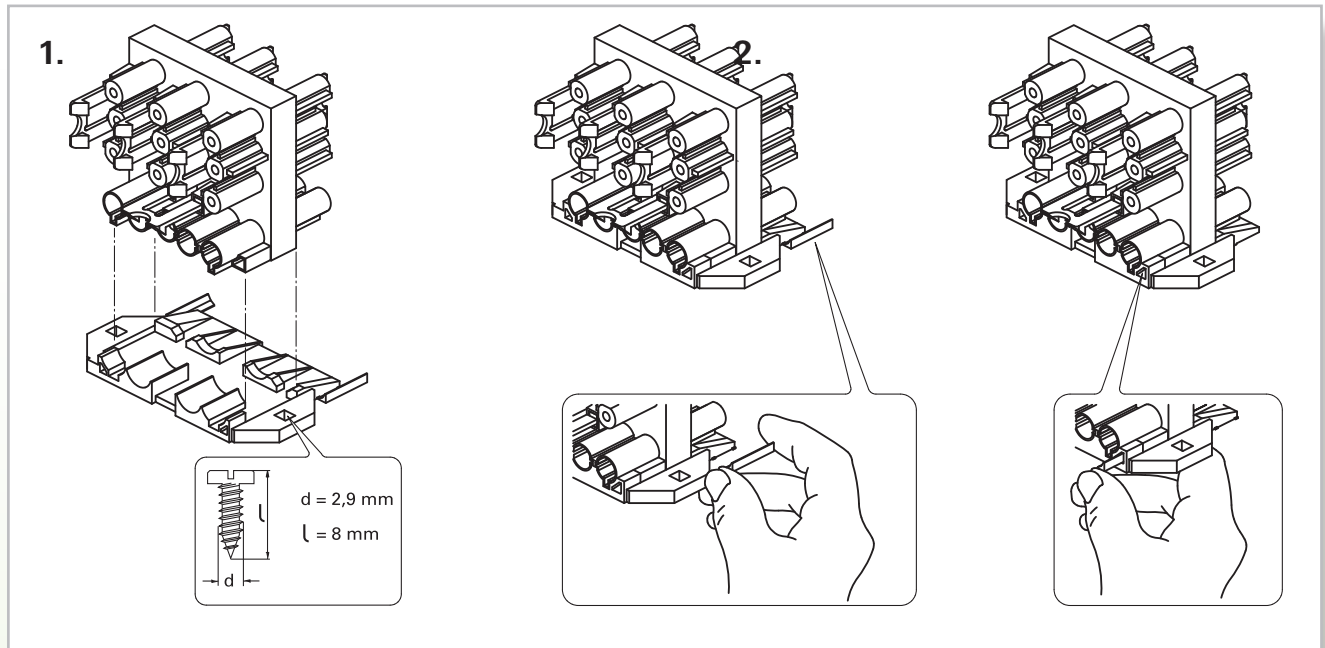


Removal from mounting plate, with screwdriver

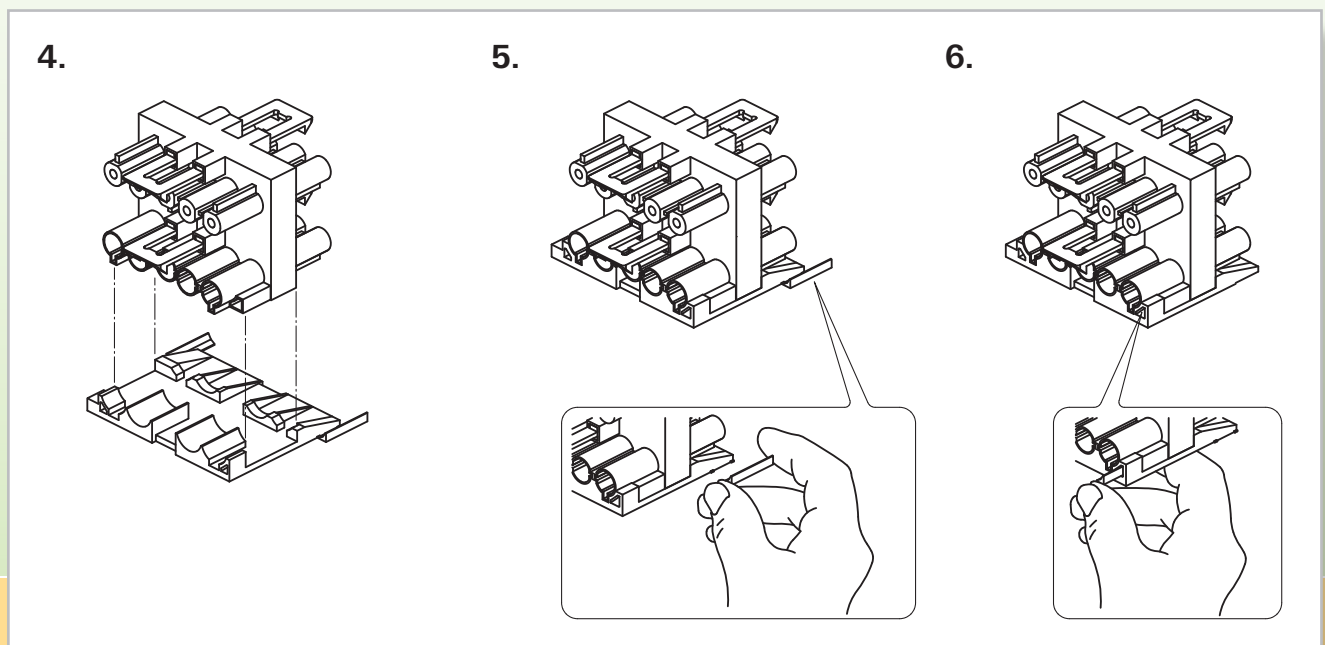


GST18i5 distribution unit mounting plate

Mounting plate with screws



Snap-on mounting plate



Mounting plate with screws

1. Place distributor on mounting plate
2. Break the locking pin off
3. Push the locking pin in

Snap-on mounting plate

4. Place distributor on mounting plate
5. Break the locking pin off
6. Push the locking pin in