



PRODUCT SHEET

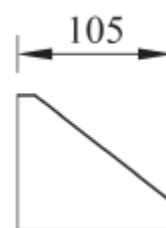
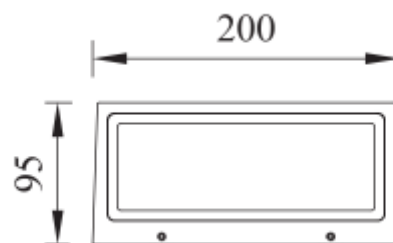
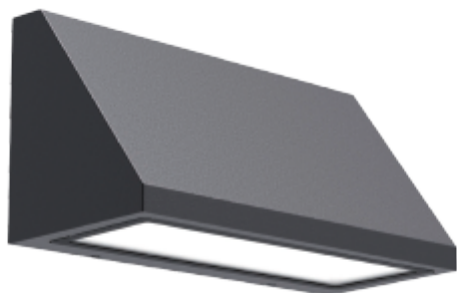
Caro G2 1000lm 830 112° 9W BK IP65

Art. no: 102571-112-2

NORLUX®

Lighting Solutions

Caro G2 1000lm 830 112° 9W BK IP65



SPECIFICATIONS

Lightsource Type:	LED (replaceable)
System Power [W]:	9W
CCT (Color Temperature):	3000K
CRI / Ra:	80
Lumen Output:	1260lm
Lumen LED (tc=25):	1400lm
Beam Angle:	112°
Lens (Diffuser):	N/A
Dimming:	None
Flickerfree:	Yes
System Voltage [V]:	230V 50Hz
Connection:	Terminal
Mounting:	Surface, Wall
Cut-out [mm]:	N/Amm
Lifetime [h]:	L80B10: 100 000h
Lumen/W:	126lm/W
UGR (<=):	17
MacAdam (SDCM):	3
Color:	Black
Length [mm]:	200mm
Height [mm]:	93mm
Width [mm]:	105mm
Weight [kg]:	0,85kg
Emergency light [h]:	No Emergency light
Emergency light testing:	N/A

