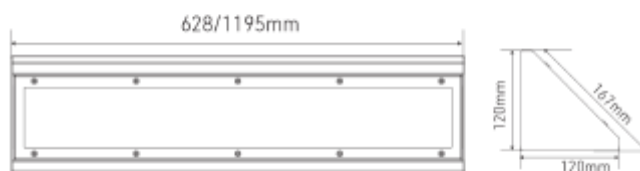
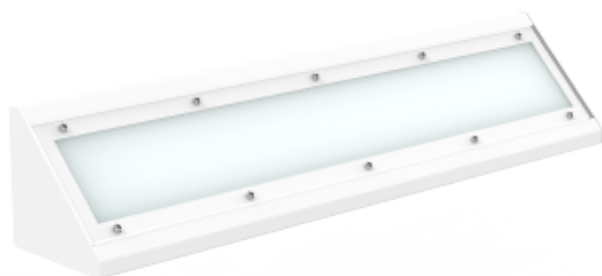




FDV SPEC SHEET

Proofsafe D

Art. no: 102971-120-3



Proofsafe D



Art. no: 102971-120-3

LIGHT TECHNICAL

Lightsource Type:	LED (replaceable)
Lumen Output:	3260
Lumen LED (tc=25):	3250
Beam Angle:	105°
CCT (Color Temperature):	3000
CRI / Ra:	80
Color Code:	830
MacAdam (SDCM):	3
Lens (Diffuser):	Opal
UGR (<=):	25

ELECTRICAL DATA

Dimming:	None
Flickerfree:	Yes
Flicker metric (Pst LM) <:	1
Stroboscopic effect metric (SVM) <	0,4
System Power [W]:	25/22/18/15
Preset Power [W]:	25
System Voltage [V]:	230V 50Hz
Protection Class:	1
Max load pr circuit - B10:	24
Max load pr circuit - B16:	39
Max load pr circuit - C10:	40
Max load pr circuit - C16:	65
Leakage current [mA]:	0,7
Inrush current I _{max} [A]:	10,85
Inrush current time [μs]:	238
Socket / Cap-Base:	N/A
Current Output [mA]:	44



FDV SPEC SHEET

Proofsafe D

Art. no: 102971-120-3



PRODUCT	
Ingress Protection:	IP65
Impact Protection:	IK10++
Operating Temperature [°C]:	-20 - 40
Lifetime [h]:	L80B10: 100 000
Color:	White
RAL:	RAL9016
Length [mm]:	628
Height [mm]:	120
Width [mm]:	120
Weight [kg]:	3,23

MOUNTING / CONNECTION	
Connection:	Quickconnectx2
Mounting:	Ceiling, Surface, Wall