



## PRODUCT SHEET

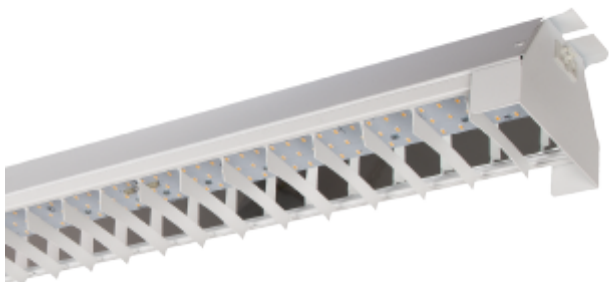
Industri

Art. no: 19100-5-4-1



# Industri

Industri is available for both ceiling surface installations and for mounting on track systems, mounting brackets for installation concept are included. Industri is equipped with louvre and is very easy to install. Industri luminaire has 2x1813 or 2x18i5-(male & female) chassis mounted contact.



### SPECIFICATIONS

Lightsource Type:	LED (built in)
System Power [W]:	60W
CCT (Color Temperature):	3000K
CRI / Ra:	80
Lumen Output:	8360lm
Beam Angle:	87-95°
Lens (Diffuser):	Louvre
System Voltage [V]:	230V 50Hz
Connection:	18i5x2
Lumen/W:	139lm/W
UGR (<=):	23
Through-wiring (mm2):	5x1,5
Color:	Grey
Length [mm]:	1270mm
Height [mm]:	103mm
Width [mm]:	135mm
Weight [kg]:	4kg