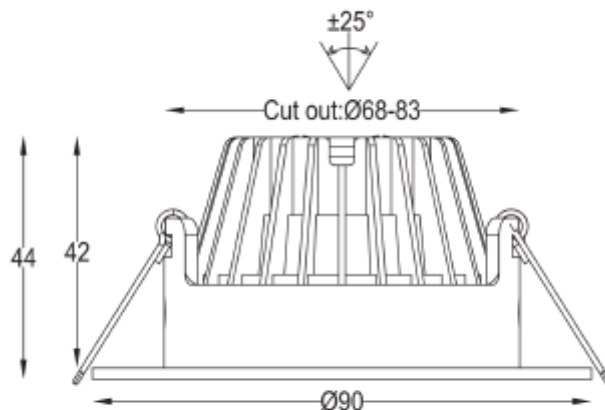
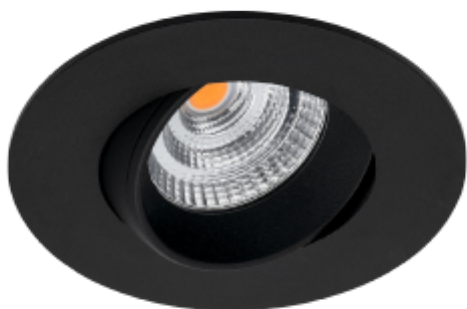




## FDV SPEC SHEET

Icarus 500lm 927 36° 7W BK phasecut Isosafe

Art. no: 101970-36-2



# Icarus 500lm 927 36° 7W BK phasecut Isosafe



Art. no: 101970-36-2

### LIGHT TECHNICAL

Lightsource Type:	LED (built in)
Lumen Output:	450
Lumen LED (tc=25):	600
Beam Angle:	36
CCT (Color Temperature):	2700
CRI / Ra:	95
Color Code:	927
MacAdam (SDCM):	3
Lens (Diffuser):	Clear

### MOUNTING / CONNECTION

Connection:	QuickConnect
Cut-out [mm]:	68-83mm
Mounting:	Recessed



## FDV SPEC SHEET

Icarus 500lm 927 36° 7W BK phasecut Isosafe

Art. no: 101970-36-2



PRODUCT		ELECTRICAL DATA	
To be recessed in insulation:	Yes, recessed in insulation	UGR (<=):	28
Ingress Protection:	IP20	Dimming:	Phase-Cut
Impact Protection:	IK02	Dimming Output Type:	Amplitude Modulation
Operating Temperature [°C]:	-20 - 45	Dimming Phasecut Type:	Leading / Trailing edge
Lifetime [h]:	L80: 100 000	Flickerfree:	Yes
Color:	Black	Standby power Psb (W) <:	0,5
RAL:	RAL9005	Flicker metric (Pst LM) <:	0,034
Height [mm]:	44	Stroboscopic effect metric (SVM) <	0,021
Diameter [mm]:	90	System Power [W]:	7
Weight [kg]:	0,3611111111111111	System Voltage [V]:	230V 50Hz
Housing Material :	Aluminium	Protection Class:	2
Diffuser Material:	Aluminium	Max load pr circuit - B10:	140
Material 2:	Polycarbonate	Max load pr circuit - B16:	225
		Max load pr circuit - C10:	280
		Max load pr circuit - C16:	448
		Leakage current [mA]:	5
		Inrush current Imax [A]:	8
		Inrush current time [µs]:	13,5
		Socket / Cap-Base:	N/A
		Current Output [mA]:	350
		Voltage Forward Min [V]:	13
		Voltage Forward Max [V]:	16
		Emergency light [h]:	No Emergency light