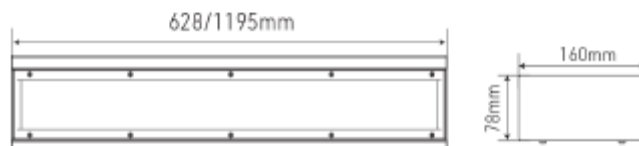
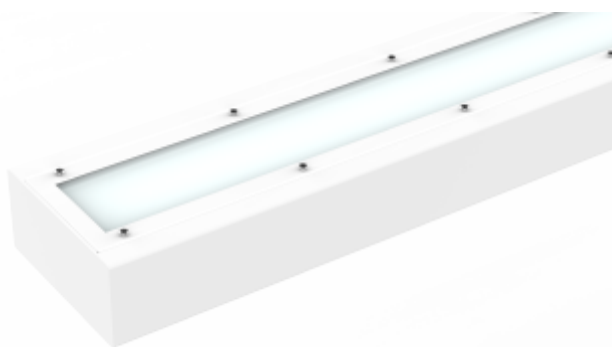




## FDV SPEC SHEET

Proofsafe I

Art. no: 102972-120-3



## Proofsafe I



Art. no: 102972-120-3

LIGHT TECHNICAL		ELECTRICAL DATA	
Lightsource Type:	LED (replaceable)	Dimming:	None
Lumen Output:	4710	Flickerfree:	Yes
Lumen LED (tc=25):	4700	Flicker metric (Pst LM) <:	1
Beam Angle:	105°	Stroboscopic effect metric (SVM) <	0,4
CCT (Color Temperature):	3000	System Power [W]:	36/30/25/21
CRI / Ra:	80	Preset Power [W]:	36
Color Code:	830	System Voltage [V]:	230V 50Hz
MacAdam (SDCM):	3	Protection Class:	1
Lens (Diffuser):	Opal	Max load pr circuit - B10:	15
UGR (<=):	25	Max load pr circuit - B16:	24
		Max load pr circuit - C10:	25
		Max load pr circuit - C16:	40
		Leakage current [mA]:	0,7
		Inrush current I <sub>max</sub> [A]:	18,1
		Inrush current time [μs]:	226
		Socket / Cap-Base:	N/A
		Current Output [mA]:	35



## FDV SPEC SHEET

Proofsafe I

Art. no: 102972-120-3



PRODUCT	
Ingress Protection:	IP65
Impact Protection:	IK10++
Operating Temperature [°C]:	-20 - 40
Lifetime [h]:	L80B10: 100 000
Color:	White
RAL:	RAL9016
Length [mm]:	1195
Height [mm]:	78
Width [mm]:	160
Weight [kg]:	7,25

MOUNTING / CONNECTION	
Connection:	Quickconnectx2
Mounting:	Ceiling, Surface, Wall