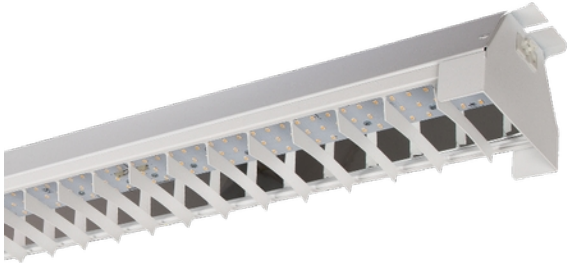


**PRODUCT DATA SHEET**

Industri 8700lm 830 87-95° 60W GR(WH Louvre) 2x18i5Chassis S

Art.no: 19100-5-4-1

*Lighting Solutions*

Industri 8700lm 830 87-95° 60W GR(WH Louvre) 2x18i5Chassis S



Industri is available for both ceiling surface installations and for mounting on track systems, mounting brackets for installation concept are included. Industri is equipped with louvre and is very easy to install. Industri luminaire has 2x1813 or 2x18i5-(male & female) chassis mounted contact.

ELECTRICAL DATA	
Protection Class (system)	1
Voltage (system) [V]	230V 50Hz

TECHNICAL DATA	
IP (system)	IP20
Outdoor	No
Through-wiring (mm ²)	5x1,5

**PRODUCT DATA SHEET**

Industri 8700lm 830 87-95° 60W GR(WH Louvre) 2x18i5Chassis S

Art.no: 19100-5-4-1

*Lighting Solutions*

PHOTOMETRIC DATA	
Efficacy (system) (lm/W)	139
CRI / Ra (>=)	80
CCT (Color Temperature) (K)	3000
Color Code	830
Lightsource Type	LED (built in)
Lens (Diffuser)	Louvre
UGR (<=)	23
Manufacturer (light source)	Samsung

DRIVER	
Manufacturer (driver)	Tridonic
Protection Class (driver)	1 or 2
Max Output Voltage (V)	250
IP (driver)	IP20
Expected Lifetime (driver) (h)	50000
Constant current or voltage (CC or CV)	CC
CC (driver) [mA]	250 - 350
CC (forward voltage driver) (V)	93.0 - 204.0
Output Current Tolerance (%)	7.5
Current Ripple (%)	5.0
Max load pr circuit - B10	13
Max load pr circuit - B16	22
Max load pr circuit - C10	21
Max load pr circuit - C16	36
Leakage current (mA)	0.45
Inrush current time (µs)	250.0
Inrush current I _{max} (A)	33.0

DIMENSIONS	
Length (product) (mm)	1270.0
Width (product) (mm)	135.0
Height (product) (mm)	103.0
Weight (product) (kg)	4.0

**PRODUCT DATA SHEET**

Industri 8700lm 830 87-95° 60W GR(WH Louvre) 2x18i5Chassis S

Art.no: 19100-5-4-1

*Lighting Solutions***MATERIALS AND SURFACES**

Color	Grey
-------	------

INSTALLATION AND CONNECTION

Connection (system)	18i5x2
---------------------	--------

ENERGY AND CERTIFICATIONS

CE mark	Yes
Energy Efficiency Class	A++