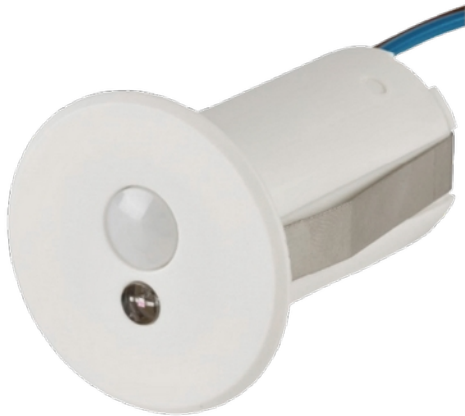


**PRODUCT DATA SHEET**

CBU Recessed Sensor IP44 Casambi WH

Art.no: 1016-S44-3

*Lighting Solutions*

CBU Recessed Sensor IP44 Casambi WH



The AIMOTION Mini Motion Sensor offers the possibility to automate light. The professional lighting management system ensures that the luminaires are switched or dimmed depending on brightness, time of day and presence. Lighting systems with alterable colour temperature change throughout the day according to the preset lighting scenes and thus support the circadian rhythm. The products communicate with each other in a mesh network. The Bluetooth range is increased without the use of gateways, routers, repeaters or extra cabling. Configuration and selection of the appropriate profile, for the different operating modes (status LED on/off), is done wirelessly via the Casambi app. Installation may only be carried out by a qualified electrician.

ELECTRICAL DATA

Voltage (system) [V]	230V 50Hz
----------------------	-----------

TECHNICAL DATA

IP (system)	IP44
-------------	------

DIMENSIONS

Width (product) (mm)	38.0
----------------------	------



PRODUCT DATA SHEET
CBU Recessed Sensor IP44 Casambi WH
Art.no: 1016-S44-3



Lighting Solutions

DIMENSIONS	
Heigth (product) (mm)	48.0

MATERIALS AND SURFACES	
Color	White