



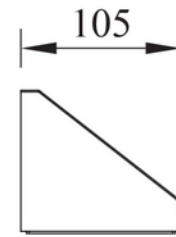
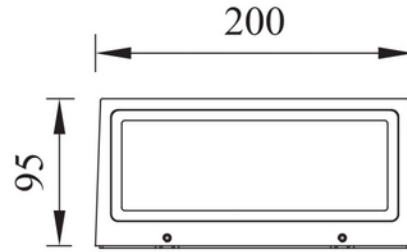
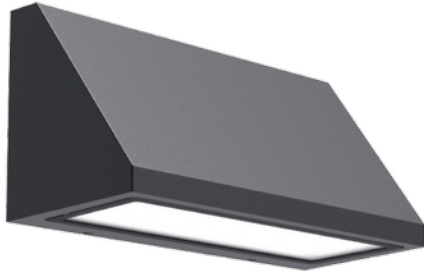
PRODUCT DATA SHEET

Caro G2 1400lm 830 112° 9W BK IP65

Art.no: 102571-112-2



Lighting Solutions



Caro G2 1400lm 830 112° 9W BK IP65



ELECTRICAL DATA	
Protection Class (system)	1
Dimming (system)	None
Voltage (system) [V]	230V 50Hz
Lightsource Max. Power (W) if Socket	N/A
Emergency light (h)	No Emergency light
Emergency light testing	N/A

TECHNICAL DATA	
IK (system)	IK06
IP (system)	IP65
Outdoor	Yes
Operating temperature (°C)	-30 - 45

**PRODUCT DATA SHEET**

Caro G2 1400lm 830 112° 9W BK IP65

Art.no: 102571-112-2

*Lighting Solutions*

PHOTOMETRIC DATA	
Efficacy (system) (lm/W)	126
CRI / Ra (>=)	80
CCT (Color Temperature) (K)	3000
Color Code	830
Lightsource Type	LED (replaceable)
Socket / Cap-Base	N/A
Lens (Diffuser)	N/A
Lifetime (h)	L80B10: 100 000
MacAdam (SDCM)	3
UGR (<=)	17
Manufacturer (light source)	Osram
Forward Current LED (min-max) (mA)	270 - 330
Forward Voltage LED (max tp=25) (V)	43.0
Driftspenning LED (min tp=65) (V)	26.0

DRIVER	
Manufacturer (driver)	HEP
Protection Class (driver)	2
Flicker metric (Pst LM) <	1.0
Stroboscopic effect metric (SVM) <	1.0
Max Output Voltage (V)	43
Dimming (driver)	None
IP (driver)	IP20
Expected Lifetime (driver) (h)	50000
Flicker-free	Yes
Constant current or voltage (CC or CV)	CC
CC (driver) [mA]	285 - 315
CC (forward voltage driver) (V)	26.0 - 43.0
Output Current Tolerance (%)	5.0
Current Ripple (%)	10.0
Max load pr circuit - B10	75
Max load pr circuit - B16	125
Max load pr circuit - C10	90
Max load pr circuit - C16	140
Max load pr circuit - C20	170

**PRODUCT DATA SHEET**

Caro G2 1400lm 830 112° 9W BK IP65

Art.no: 102571-112-2

*Lighting Solutions*

DRIVER	
Max load pr circuit - C25	210
Max load pr circuit - C32	270
Leakage current (mA)	1.0
Inrush current time (μ s)	3600.0
Inrush current I _{max} (A)	1.0

DIMENSIONS	
Length (product) (mm)	200.0
Width (product) (mm)	105.0
Height (product) (mm)	93.0
Weight (product) (kg)	0.85

MATERIALS AND SURFACES	
Color	Black
RAL Code	RAL9005
Corrosion Class	C4

INSTALLATION AND CONNECTION	
Areas of use	Residence
Mounting	Surface, Wall
Connection (system)	Terminal

ENERGY AND CERTIFICATIONS	
Energy Class EPREL	E
CE mark	Yes
EPD number	NEPD-14653-15268



PRODUCT DATA SHEET

Caro G2 1400lm 830 112° 9W BK IP65

Art.no: 102571-112-2



Lighting Solutions

LIGHT DISTRIBUTION

