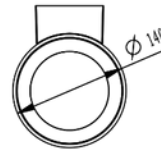
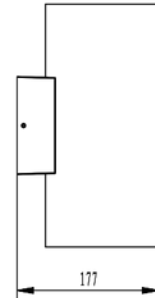


**PRODUCT DATA SHEET**

Dalim Up&Down 2400lm 40° 2x20W Dark Grey Phasecut  
Art.no: 2430-40-7



*Lighting Solutions*



## Dalim Up&Down 2400lm 40° 2x20W Dark Grey Phasecut



Dalim are a wall mounted outdoor luminaire with up and down light. Suited for larger buildings. Quickconnect for easy installation

ELECTRICAL DATA	
Protection Class (system)	1
Dimming (system)	Phase-Cut
Voltage (system) [V]	230V 50Hz

TECHNICAL DATA	
IK (system)	IK08
IP (system)	IP65
Outdoor	Yes
Operating temperature (°C)	-20 - 50

**PRODUCT DATA SHEET**

Dalim Up&Down 2400lm 40° 2x20W Dark Grey Phasecut  
Art.no: 2430-40-7



*Lighting Solutions*

PHOTOMETRIC DATA	
CRI / Ra (>=)	80
CCT (Color Temperature) (K)	3000
Color Code	830
Lightsource Type	LED (built in)
Socket / Cap-Base	N/A
Lens (Diffuser)	Clear

DRIVER	
Protection Class (driver)	2
Output Current Tolerance (%)	5.0

DIMENSIONS	
Length (product) (mm)	177.0
Width (product) (mm)	140.0
Height (product) (mm)	300.0
Weight (product) (kg)	3.4

MATERIALS AND SURFACES	
Color	Dark Grey
RAL Code	RAL7024

INSTALLATION AND CONNECTION	
Areas of use	Cottage, Facade, Outdoor, Residence
Mounting	Surface, Wall
Connection (system)	QuickConnect

ENERGY AND CERTIFICATIONS	
CE mark	Yes
Energy Efficiency Class	A++ - A