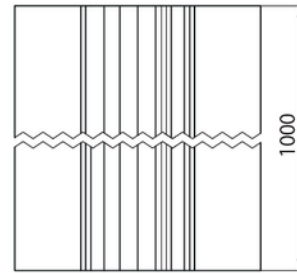
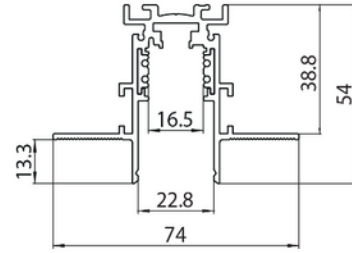
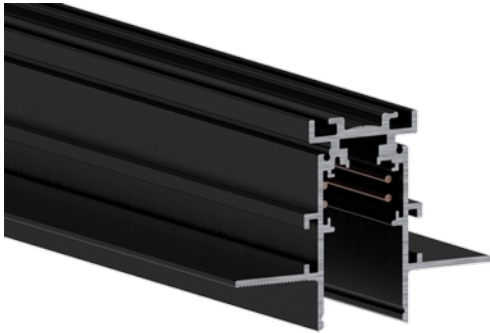


**PRODUCT DATA SHEET**

Track Evo 48V Recessed ST5 2m BK DALI

Art.no: 9500-ST5E-2-2

*Lighting Solutions*

Track Evo 48V Recessed ST5 2m BK DALI



Black 2m EVO ST5 48V DALI track for trimless installation

| ELECTRICAL DATA | |
|---------------------------|-------|
| Protection Class (system) | 3 |
| Voltage (system) [V] | 48VDC |
| Current (A) | 15 |

| TECHNICAL DATA | |
|----------------|----------------|
| IP (system) | IP20 |
| Outdoor | No |
| Track Family | 48V EVO ST5 |
| Track Subgroup | Track Recessed |

| PHOTOMETRIC DATA | |
|-------------------------|-----|
| Dimmable (light source) | Yes |

**PRODUCT DATA SHEET**

Track Evo 48V Recessed ST5 2m BK DALI

Art.no: 9500-ST5E-2-2

*Lighting Solutions*

| DIMENSIONS | |
|-----------------------|-------|
| Length (product) (mm) | 200.0 |
| Width (product) (mm) | 74.0 |
| Height (product) (mm) | 54.0 |

| MATERIALS AND SURFACES | |
|------------------------|-----------|
| Color | Black |
| RAL Code | RAL9005 |
| Housing Material | Aluminium |

| INSTALLATION AND CONNECTION | |
|-----------------------------|---|
| Areas of use | Cottage, Hotel, Residence, Restaurant, Shop, Showroom |
| Mounting | Recessed, Ceiling |

| ENERGY AND CERTIFICATIONS | |
|---------------------------|-----|
| CE mark | Yes |