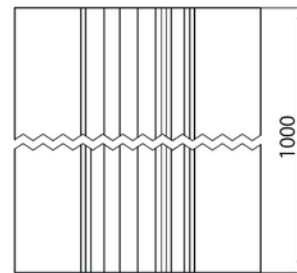
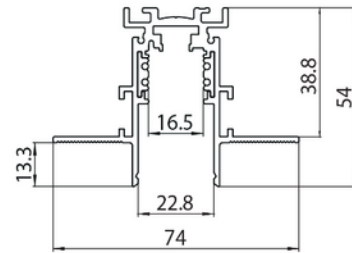
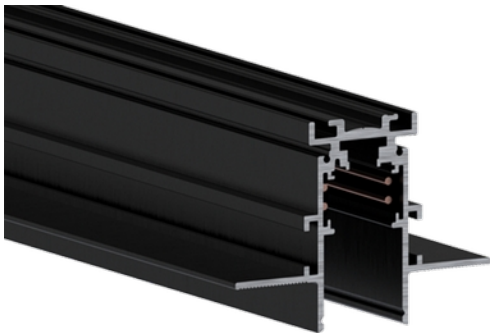


**PRODUCT DATA SHEET**

Track Evo 48V Recessed ST5 3m BK DALI

Art.no: 9500-ST5E-3-2

*Lighting Solutions*

Track Evo 48V Recessed ST5 3m BK DALI



Black 3m EVO ST5 48V DALI track for trimless installation

ELECTRICAL DATA	
Protection Class (system)	3
Voltage (system) [V]	48VDC
Current (A)	15

TECHNICAL DATA	
IP (system)	IP20
Outdoor	No
Track Family	48V EVO ST5
Track Subgroup	Track Recessed

PHOTOMETRIC DATA	
Dimmable (light source)	Yes

**PRODUCT DATA SHEET**

Track Evo 48V Recessed ST5 3m BK DALI

Art.no: 9500-ST5E-3-2

*Lighting Solutions*

DIMENSIONS	
Length (product) (mm)	300.0
Width (product) (mm)	74.0
Height (product) (mm)	54.0

MATERIALS AND SURFACES	
Color	Black
RAL Code	RAL9005
Housing Material	Aluminium

INSTALLATION AND CONNECTION	
Areas of use	Cottage, Hotel, Residence, Restaurant, Shop, Showroom
Mounting	Recessed, Ceiling

ENERGY AND CERTIFICATIONS	
CE mark	Yes